

# RAGSDALE SOLAR FACILITY

## 30% CIVIL DESIGN

MADISON COUNTY, MS

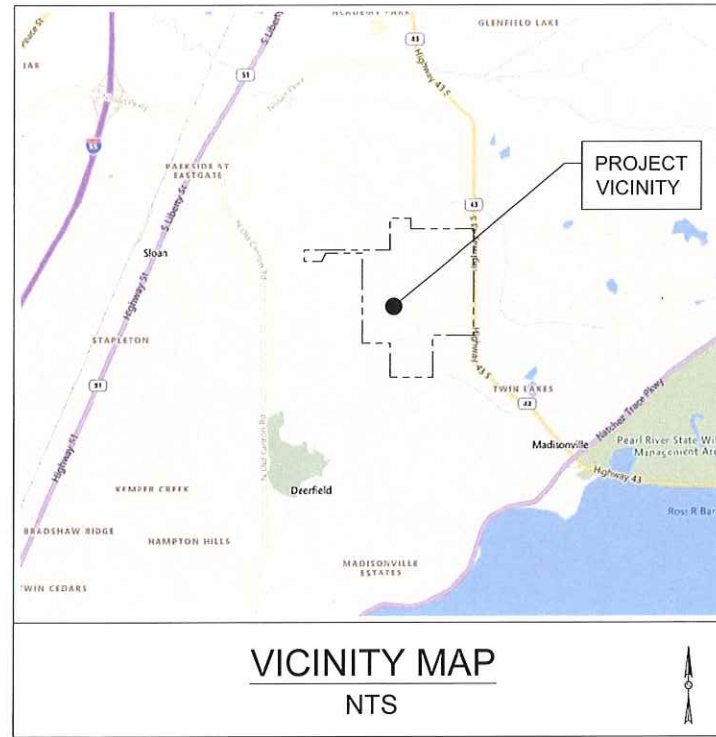
SITE LOCATION: 32°33'15.84"N, 90°0'40.68"W



SIGNAL ENERGY



REVAMP ENGINEERING, INC.



DRAWING INDEX			
SHEET NUMBER	SHEET TITLE	REV	DATE
RAG1-C-000	COVER	A	06/07/2023
RAG1-C-001 - 002	GENERAL NOTES	A	06/07/2023
RAG1-C-100	OVERALL KEY MAP	A	06/07/2023
RAG1-C-200	OVERALL EXISTING CONDITIONS & DEMOLITION PLAN	A	06/07/2023
RAG1-C-301 - 305	SITE PLAN	A	06/07/2023
RAG1-C-401 - 402	SITE DETAILS	A	06/07/2023
RAG1-C-403 - 405	GRADING & EROSION CONTROL DETAILS	A	06/07/2023

OWNER

EDP RENEWABLES  
RAGSDALE SOLAR, LLC  
1501 MCKINNEY STREET, SUITE 1300  
HOUSTON, TX 77010  
713-265-0350

EPC

SIGNAL ENERGY  
CONTACT: KAREN MCEWAN  
2034 HAMILTON PLACE BLVD. SUITE 100  
CHATTANOOGA, TN 37421  
423-635-4273  
KAREN.MCEWAN@SIGNALENERGY.COM

CIVIL ENGINEER

KLEINFELDER, INC.  
CONTACT: GARRETT OTTEN, PE  
3200 GATEWAY CENTRE BOULEVARD,  
SUITE 100  
MORRISVILLE, NC 27560  
919-755-5011  
GOTTEN@KLEINFELDER.COM

ELECTRICAL ENGINEER

REVAMP ENGINEERING, INC.  
CONTACT: KAMAL BAGHA, PE  
428 13TH STREET, 3RD FLOOR  
OAKLAND, CA 94612  
510-343-5399  
KBAGHA@REVAMPENG.COM

DATUM:  
THE HORIZONTAL DATUM FOR THIS PLAN SET UTILIZES THE MISSISSIPPI STATE PLANE COORDINATES, WEST ZONE, NSRS11 (2011) ADJUSTMENT, US SURVEY FEET.

PERMITTING & PLANNING NOTES:  
ALL WORK SHALL CONFORM TO ALL PERTINENT CODES, REGULATIONS, LAWS, AND ORDINANCES AS REQUIRED BY THE STATE OF MISSISSIPPI.



Know what's below.  
Call before you dig.

VER.	DATE	MODIFICATION	PAGES MODIFIED	VER.	DATE	MODIFICATION	PAGES MODIFIED	DATE	SCALE	RAGSDALE SOLAR PARK	RAGSDALE SOLAR FACILITY MADISON COUNTY, MS	KLEINFELDER ENGINEERING, INC. REVAMP
								DATE	SCALE			
A	06/07/2023	30% CIVIL DESIGN	#					06/07	DRAWN MM			
								06/07	CHECKED AH			
								06/07	APPROVED DC			
									Format ANSI D	SIGNAL ENERGY	Proj. N°: XXXXXXX	Doc. N°:
											COVER	Rev. A Page: 1 of 15
												Drawing N°: RAG1-C-000

C:\pwworking\kleinfelder\p01\figmadiso-alfm\0227873\Ragsdale - Cover & General Notes.dwg - Jun 07, 2023 - 12:26pm



SITE DESCRIPTION

TRAFFIC CONTROLS

EARTHWORK / DEMUCKING PROCEDURES

EDP RENEWABLES IS PROPOSING DEVELOPMENT OF A SOLAR ENERGY FACILITY IN MADISON COUNTY, MS. THE PROPERTY IS LOCATED APPROXIMATELY 4 MILES SOUTHEAST OF THE CITY OF CANTON, MISSISSIPPI, IN BETWEEN US HIGHWAY 43 S AND N OLD CANTON ROAD ALONG ENDRIS ROAD. REFER TO THE LOCATION MAP AND VICINITY MAP ON THE COVER SHEET FOR MORE DETAIL.

1. MAINTENANCE OF TRAFFIC MUST BE IN ACCORDANCE WITH MISSISSIPPI DEPARTMENT OF TRANSPORTATION (MDOT) STANDARDS AND SPECIFICATIONS.

- 1. CONTRACTOR TO FOLLOW THE GUIDANCE OF THE REFERENCED GEOTECHNICAL ENGINEERING INVESTIGATION REPORT TO DETERMINE DEPTH OF DEMUCKING AND/OR REMOVAL OF UNSUITABLE FILL.
2. ALL EXISTING DEBRIS (ABOVE OR BELOW GROUND), CONSTRUCTION DEBRIS, AND OTHER WASTE MATERIAL MUST BE DISPOSED OF OFF-SITE BY THE CONTRACTOR. IN ACCORDANCE WITH APPLICABLE REGULATORY AGENCY REQUIREMENTS IN A LEGAL MANNER.
3. PROPOSED SPOT ELEVATIONS REPRESENT GROUND SURFACE GRADES, UNLESS OTHERWISE NOTED.

GENERAL GRADING AND DRAINAGE NOTES

- 1. ALL GRADING CONSTRUCTION MUST BE IN ACCORDANCE WITH MDEQ, MDOT, AND/OR MADISON COUNTY STANDARDS AND SPECIFICATIONS. IN THE EVENT THERE ARE SIMILAR OR CONFLICTING SPECIFICATIONS, THE MOST STRINGENT ONE MUST APPLY.
2. ALL DIMENSIONS AND GRADES SHOWN ON THE PLANS MUST BE FIELD VERIFIED BY THE CONTRACTOR PRIOR TO CONSTRUCTION. CONTRACTOR MUST NOTIFY THE OWNER IF ANY DISCREPANCIES EXIST PRIOR TO PROCEEDING WITH CONSTRUCTION FOR NECESSARY PLAN OR GRADE CHANGES.
3. ALL SITE GEOLOGY, SOIL COMPACTION, SITE PREPARATION, SUBGRADE PREPARATION, FILL MATERIAL, FILL PLACEMENT, DENSIFICATION, AND PROOFROLLING MUST BE IN ACCORDANCE WITH THE GEOTECHNICAL REPORT.
4. ALL CONSTRUCTION AREAS NEAR WETLANDS OR JURISDICTIONAL WATERS ARE TO BE MONITORED CLOSELY BY THE CONTRACTOR FOR EROSION. PERIMETER EROSION CONTROL MEASURES MUST BE USED IN THESE AREAS.
5. ALL SPOIL MATERIAL MUST BE PLACED ON THE UPLAND SIDE OF ANY SLOPED CONSTRUCTION AREA WITH LOW SIDE WRAPPED IN SILT FENCE OR OTHER APPROVED PERIMETER EROSION CONTROL MEASURE.
6. THE CONTRACTOR MUST TAKE WHATEVER STEPS NECESSARY TO PREVENT EROSION INTO NEARBY JURISDICTIONAL FEATURES.
7. STOCKPILE SATISFACTORY EXCAVATED MATERIALS UNTIL REQUIRED FOR FILL, PLACE, GRADE, AND SHAPE STOCKPILES FOR POSITIVE DRAINAGE.
8. EARTHWORK AND GRADING:
A. MATERIALS AND CONSTRUCTION METHODS FOR EARTHWORK, EXCAVATION, EMBANKMENT, AND GRADING MUST MEET THE REQUIREMENTS OF MDOT AND OF THE GEOTECHNICAL REPORT AND MUST BE PERFORMED TO ACHIEVE FINAL GRADES, ELEVATIONS, AND TYPICAL SECTIONS AS SHOWN ON THE PLANS FOR PROPOSED WORK.
B. CLEARING AND GRUBBING: CLEARING AND GRUBBING MUST MEET THE REQUIREMENTS OF MDOT AND OF THE GEOTECHNICAL REPORT AND MUST BE PERFORMED WITHIN THE LIMITS OF THE PROJECT WORK.
C. ROUGH GRADING: THE CONTRACTOR MUST GRADE THE SITE TO MEET THE REQUIREMENTS OF MDOT AND OF THE GEOTECHNICAL REPORT AND MUST CONFORM TO THE LINES, GRADES, AND TYPICAL SECTIONS AS SHOWN ON THE PLANS.
D. SODDING, SEED, AND MULCH: SODDING, SEED, AND MULCH MUST MEET THE REQUIREMENTS OF MDOT.

- 4. ALL DELETERIOUS SUBSURFACE MATERIAL IN AREAS RECEIVING STRUCTURAL FILL OR UNDERNEATH FOUNDATIONS (I.E. MUCK, PEAT, BURIED DEBRIS) IS TO BE EXCAVATED AND REPLACED WITH SUITABLE/COMPACTED SOILS. AS DIRECTED BY THE GEOTECHNICAL REPORT. DELETERIOUS MATERIAL IS TO BE STOCKPILED OR REMOVED FROM THE SITE. EXCAVATED AREAS ARE TO BE BACKFILLED WITH APPROVED MATERIALS AND COMPACTED AS SHOWN ON THESE PLANS. CONTRACTOR IS RESPONSIBLE FOR ACQUIRING ANY PERMITS THAT ARE NECESSARY FOR REMOVING DELETERIOUS MATERIAL FROM THE SITE.
5. THE CONTRACTOR MUST BE RESPONSIBLE FOR PROTECTING EXCAVATIONS AGAINST COLLAPSE AND MUST PROVIDE BRACING, SHEETING, OR SHORING AS NECESSARY. DEWATERING METHODS MUST BE USED AS REQUIRED.
6. ALL NECESSARY FILL AND EMBANKMENT THAT IS PLACED DURING CONSTRUCTION MUST CONSIST OF MATERIAL SPECIFIED BY THE GEOTECHNICAL REPORT AND BE PLACED AND COMPACTED ACCORDING TO THESE PLANS.
7. THE CONTRACTOR MUST ENSURE THAT PROPER SOIL DENSITIES ARE ACHIEVED FOR PLACEMENT OF ANY FOOTING SUPPORT DESCRIBED ON THESE PLANS. IT MUST ALSO BE THE RESPONSIBILITY OF THE CONTRACTOR TO ENSURE THAT SUFFICIENT SOILS TESTING HAS BEEN PERFORMED PRIOR TO FINAL INSTALLATION OF IMPROVEMENTS.

Table with 2 columns: Field Name and Value. Fields include PROJECT NAME, SITE ENTRANCE COORDINATES, COUNTY, STATE, HORIZONTAL DATUM, VERTICAL DATUM, EXISTING USE, PROPOSED USE, and RECEIVING WATERS.

DRAINTILE EXISTING POTENTIAL

- ANY AND ALL DRAINTILE FOUND DURING CONSTRUCTION SHALL RECEIVE TREATMENT AS FOLLOWS:
1. CONTRACTOR TO CONSIDER BEST MANAGEMENT PRACTICE AND NOTIFY THE EOR.
2. PROTECT AT EXTENT POSSIBLE.
3. IF DAMAGED, FIXED IN-PLACE WITH IN-KIND MATERIAL(S).
4. REROUTE NEW DRAINTILE TO PROMOTE POSITIVE DRAINAGE.
5. IF NO REGRADE WAS PROPOSED, EOR TO PROPOSE GRADING DESIGN TO DRAIN, ELIMINATING NEED FOR DRAINTILE.

GENERAL NOTES

- 1. LOCATIONS SHOWN ON THE PLANS ARE NORTH AMERICAN DATUM OF NSRS11, 2011 ADJUSTMENT, MISSISSIPPI STATE PLANES, WEST ZONE, US SURVEY FOOT. ELEVATIONS SHOWN ON THE PLANS ARE NORTH AMERICAN VERTICAL DATUM OF 1988 (NAVD88).
2. THE CONTRACTOR MUST NOTIFY UTILITY OWNERS THROUGH MISSISSIPPI ONE-CALL SYSTEM THREE BUSINESS DAYS IN ADVANCE OF BEGINNING CONSTRUCTION ON THE JOB SITE. CALL 1-601-362-4374 AND 811 (NATIONWIDE TOLL FREE UTILITY LOCATE). THE LOCATION OF THE UTILITIES SHOWN ON THE PLANS ARE APPROXIMATE ONLY. THE EXACT LOCATION MUST BE DETERMINED BY THE CONTRACTOR DURING CONSTRUCTION.
3. INFORMATION SHOWN ON THE PLANS CONCERNING THE TYPE AND LOCATION OF UNDERGROUND AND OVERHEAD UTILITIES IS BASED ON DATA PROVIDED BY UTILITY OWNERS, AVAILABLE RECORDS, AND FIELD SURVEYS. THE PLANS MAY NOT SHOW ALL UTILITIES WITHIN PROJECT LIMITS, EITHER ACTIVE OR PLACED OUT-OF-SERVICE, OR THAT SAID UTILITIES ARE ACTUALLY IN THE HORIZONTAL OR VERTICAL POSITIONS SHOWN IN THE PLANS. DETERMINE THE TYPE AND LOCATION OF ALL UTILITIES TO ESTABLISH THEIR LOCATIONS AND TO AVOID DAMAGE TO UNDERGROUND UTILITIES.
4. IF CONFLICTS WITH EXISTING UTILITIES ARE IDENTIFIED DURING CONSTRUCTION, CONTRACTOR MUST NOTIFY DESIGN ENGINEER AND UTILITY OWNER PRIOR TO PERFORMING ANY REMOVAL OR MODIFICATIONS.
5. WATER TRUCKS MUST BE USED FOR DUST CONTROL, IF NECESSARY.
6. WHERE EXCAVATIONS ARE IN CLOSE PROXIMITY OF TREES NOT SHOWN AS BEING REMOVED, THE CONTRACTOR MUST USE EXTREME CARE IN NOT DAMAGING THE ROOT SYSTEM. NO EQUIPMENT, SUPPLIES, OR VEHICLES ARE TO BE STORED OR PARKED WITHIN THE DRIP LINE OF TREES TO REMAIN AND BE PRESERVED.
7. THE CONTRACTOR MUST COORDINATE WITH THE PROJECT OWNER AND DISPOSE OF ALL DEBRIS IN A LEGAL MANNER UPON COMPLETION OF THE PROJECT.
8. RESTORATION OF DAMAGED STRUCTURES OR UTILITIES: IT MUST BE THE RESPONSIBILITY OF THE CONTRACTOR TO REPAIR, REBUILD, OR RESTORE TO ITS FORMER CONDITION, ANY AND ALL PORTIONS OF EXISTING UTILITIES, STRUCTURES, EQUIPMENT, APPURTENANCES OR FACILITIES, WHICH MAY BE DISTURBED OR DAMAGED DUE TO THIS CONSTRUCTION OPERATION.
9. COORDINATE REMOVAL OF ANY EXISTING ITEMS WITH APPLICABLE FEDERAL, STATE, COUNTY, CITY, LOCAL AGENCIES, UTILITY COMPANIES, OR LANDOWNERS.
10. ABANDONMENT OF SEPTIC TANKS, IF ENCOUNTERED, MUST BE IN ACCORDANCE WITH THE HEALTH DEPARTMENT POLICY.
11. FINAL CLEANUP: UPON COMPLETION OF THE WORK, THE CONTRACTOR MUST CLEAR AND REMOVE FROM THE PROJECT AREA, ALL FALSEWORK, EQUIPMENT, SURPLUS AND DISCARDED MATERIALS, RUBBISH, AND TEMPORARY STRUCTURES WHICH RESULT FROM THE WORK.
12. CONTRACTOR TO OBTAIN AND REVIEW ALL PERMITS PRIOR TO STARTING CONSTRUCTION.

STORM DRAINAGE SYSTEM

- 1. THE CONTRACTOR MUST MAINTAIN AND PROTECT THE STORMWATER COLLECTION SYSTEM (INLETS, PIPES) FROM EXCESSIVE MUD, SILT, DIRT, DEBRIS, TRASH, ETC. UNTIL FINAL ACCEPTANCE OF THE PROJECT.
2. MATERIALS, TRENCH EXCAVATION, PIPE LAYING, AND BACKFILLING OPERATIONS FOR DRAINAGE IMPROVEMENTS MUST MEET THE REQUIREMENTS OF MDOT. PIPE MUST BE LAID ON TRUE ALIGNMENT IN A PIPE TRENCH WITH ADEQUATE SUPPORTING VALUE AND "BEDDED" TO THE DETAIL SHOWN IN THE PLANS. ALL BACKFILL MUST BE COMPACTED PER GEOTECHNICAL RECOMMENDATIONS AND MAXIMUM DENSITY AS DETERMINED BY AASHTO T-180, UNLESS OTHERWISE SHOWN ON THE PLANS.

SPILL PREVENTION AND CONTROL

THE FOLLOWING ARE THE MATERIAL MANAGEMENT PRACTICES THAT MUST BE USED TO REDUCE THE RISK OF SPILLS OR OTHER ACCIDENTAL EXPOSURE OF MATERIALS AND SUBSTANCES TO STORMWATER RUNOFF.

GOOD HOUSEKEEPING

- 1. SUPERINTENDENT MUST INSPECT PROJECT AREA DAILY FOR PROPER STORAGE, USE, AND DISPOSAL OF CONSTRUCTION MATERIALS.
2. STORE ONLY ENOUGH MATERIAL ON SITE FOR PROJECT COMPLETION.
3. ALL SUBSTANCES SHOULD BE USED BEFORE DISPOSAL OF CONTAINER.
4. ALL CONSTRUCTION MATERIALS STORED MUST BE ORGANIZED AND IN THE PROPER CONTAINER, AND IF POSSIBLE, STORED UNDER A ROOF OR PROTECTIVE COVER.
5. PRODUCTS MUST NOT BE MIXED UNLESS DIRECTED BY THE MANUFACTURER.
6. ALL PRODUCTS MUST BE USED AND DISPOSED OF ACCORDING TO THE MANUFACTURER'S RECOMMENDATIONS.

HAZARDOUS PRODUCTS

- 1. MATERIALS SHOULD BE KEPT IN ORIGINAL CONTAINER WITH LABELS UNLESS THE ORIGINAL CONTAINERS CANNOT BE RESEALED. IF ORIGINAL CONTAINERS CANNOT BE USED, LABELS AND PRODUCT INFORMATION MUST BE SAVED.
2. PROPER DISPOSAL PRACTICES MUST ALWAYS BE FOLLOWED IN ACCORDANCE WITH MANUFACTURER AND LOCAL/STATE REGULATIONS.

PRODUCT SPECIFIC PRACTICES

- 1. PETROLEUM PRODUCTS MUST BE STORED IN PROPER CONTAINERS AND CLEARLY LABELED. VEHICLES CONTAINING PETROLEUM PRODUCTS MUST BE PERIODICALLY INSPECTED FOR LEAKS. PRECAUTIONS MUST BE TAKEN TO AVOID LEAKAGE OF PETROLEUM PRODUCTS ON SITE.
2. THE MINIMUM AMOUNT OF FERTILIZER MUST BE USED AND MIXED INTO THE SOIL IN ORDER TO LIMIT EXPOSURE TO STORMWATER. FERTILIZERS MUST BE STORED IN A COVERED SHED. THE CONTENTS OF ANY PARTIALLY USED BAGS OF FERTILIZER MUST BE TRANSFERRED TO A SEALABLE PLASTIC BIN TO AVOID SPILLS.
3. PAINT CONTAINERS MUST BE SEALED AND STORED WHEN NOT IN USE. EXCESS PAINT MUST BE DISPOSED OF IN AN APPROVED MANNER.
4. CONCRETE TRUCKS MUST NOT BE ALLOWED TO WASH OUT OR DISCHARGE SURPLUS CONCRETE OR DRUM WASH WATER ON THE SITE.

SAFETY

- 1. ALL SUBSURFACE CONSTRUCTION MUST COMPLY WITH THE "TRENCH SAFETY ACT". THE CONTRACTOR MUST ENSURE THAT THE METHOD OF TRENCH PROTECTION AND CONSTRUCTION IS IN COMPLIANCE WITH THE OCCUPATIONAL SAFETY AND HEALTH ADMINISTRATION (OSHA) REGULATIONS. IT MUST BE THE SOLE RESPONSIBILITY OF THE CONTRACTOR TO COMPLY AND ENFORCE ALL APPLICABLE SAFETY REGULATIONS. THE ABOVE INFORMATION HAS BEEN PROVIDED FOR THE CONTRACTOR'S INFORMATION ONLY AND DOES NOT IMPLY THAT THE OWNER OR ENGINEER MUST INSPECT AND/OR ENFORCE SAFETY REGULATIONS.
2. DURING THE CONSTRUCTION AND/OR MAINTENANCE OF THIS PROJECT, ALL SAFETY REGULATIONS ARE TO BE ENFORCED. THE CONTRACTOR OR HIS REPRESENTATIVE MUST BE RESPONSIBLE FOR THE CONTROL AND SAFETY OF THE TRAVELING PUBLIC AND THE SAFETY OF HIS/HER PERSONNEL. LABOR SAFETY REGULATIONS MUST CONFORM TO THE PROVISIONS SET FORTH BY OSHA IN THE FEDERAL REGISTER OF THE DEPARTMENT OF TRANSPORTATION. THE MINIMUM STANDARDS AS SET FORTH IN THE CURRENT EDITION OF "MANUAL ON UNIFORM TRAFFIC CONTROL DEVICES" (MUTCD) MUST BE FOLLOWED IN THE DESIGN, APPLICATION, INSTALLATION, MAINTENANCE, AND REMOVAL OF ALL TRAFFIC CONTROL DEVICES, WARNING DEVICES, AND BARRIERS NECESSARY TO PROTECT THE PUBLIC AND CONSTRUCTION PERSONNEL FROM HAZARDS WITHIN THE PROJECT LIMITS. CONTRACTOR MUST PROVIDE FOR THE SAFETY AND CONTROL OF LOCAL TRAFFIC DURING CONSTRUCTION. ADDITIONAL INFORMATION MAY BE REQUIRED IF LANE CLOSURE DURATIONS ARE LONGER THAN DAYTIME OPERATIONS.



Know what's below. Call before you dig.

Project information block including DATE, SCALE, PROJECT NAME (RAGSDALE SOLAR FACILITY), GENERAL NOTES, and logos for RAGSDALE SOLAR PARK, SIGNAL ENERGY, and KLEINFELDER REVAMP ENGINEERING, INC.

C:\pwworking\kleinfelder\p01\gmadia-ellen@kleinfelder.com\d0227875\Ragsdale - Cover & General Notes.dwg - Jun 07, 2023 - 12:23pm



**EROSION AND SEDIMENT CONTROLS**

BEST MANAGEMENT PRACTICES SHALL BE USED FOR THIS PROJECT TO CONTROL EROSION AND TURBIDITY CAUSED BY STORM WATER RUN-OFF. THE CONTRACTOR IS RESPONSIBLE FOR PLACING AND MAINTAINING THESE CONTROL METHODS AS SHOWN ON THE PLANS OR AS REQUIRED BEFORE ANY SITE GRADING OR CONSTRUCTION TAKES PLACE. THE CONTRACTOR SHALL ALSO PROVIDE THE REQUIRED EROSION PROTECTION AS REQUIRED BY LOCAL, STATE, AND FEDERAL LAW.

1. EROSION AND SEDIMENT CONTROLS. DESIGN, INSTALL, AND MAINTAIN EFFECTIVE EROSION CONTROLS AND SEDIMENT CONTROLS TO MINIMIZE THE DISCHARGE OF POLLUTANTS. AT A MINIMUM, SUCH CONTROLS MUST BE DESIGNED, INSTALLED, AND MAINTAINED TO:

- CONTROL STORMWATER VOLUME AND VELOCITY WITHIN THE SITE TO MINIMIZE SOIL EROSION IN ORDER TO MINIMIZE POLLUTANT DISCHARGES;
- CONTROL STORMWATER DISCHARGES, INCLUDING BOTH PEAK FLOWRATES AND TOTAL STORMWATER VOLUME, TO MINIMIZE CHANNEL AND STREAM BANK EROSION AND SCOUR IN THE IMMEDIATE VICINITY OF DISCHARGE POINT(S);
- MINIMIZE THE AMOUNT OF SOIL EXPOSED DURING CONSTRUCTION ACTIVITY;
- MINIMIZE THE DISTURBANCE OF STEEP SLOPES;
- MINIMIZE SEDIMENT DISCHARGES FROM THE SITE. THE DESIGN, INSTALLATION, AND MAINTENANCE OF EROSION AND SEDIMENT CONTROLS MUST ADDRESS FACTORS SUCH AS THE AMOUNT, FREQUENCY, INTENSITY, AND DURATION OF PRECIPITATION, THE NATURE OF RESULTING STORMWATER RUNOFF, AND SOIL CHARACTERISTICS, INCLUDING THE RANGE OF SOIL PARTICLE SIZES EXPECTED TO BE PRESENT ON THE SITE;
- IF EARTH DISTURBANCE ACTIVITIES ARE LOCATED IN CLOSE PROXIMITY TO A SURFACE WATER OF THE STATE, PROVIDE AND MAINTAIN APPROPRIATE NATURAL BUFFERS IF FEASIBLE AND AS NECESSARY, AROUND SURFACE WATER OF THE STATE, DEPENDING ON SITE-SPECIFIC TOPOGRAPHY, SENSITIVITY, AND PROXIMITY TO WATER BODIES. DIRECT STORMWATER TO VEGETATED AREAS AND MAXIMIZE STORMWATER INFILTRATION TO REDUCE POLLUTANT DISCHARGES, UNLESS INFEASIBLE. IF PROVIDING BUFFERS IS INFEASIBLE, THE PERMITTEE SHALL DOCUMENT THE REASON THAT NATURAL BUFFERS ARE INFEASIBLE AND SHALL IMPLEMENT ADDITIONAL EROSION AND SEDIMENT CONTROLS TO REDUCE SEDIMENT LOAD;
- PRESERVE NATIVE TOPSOIL AT THE SITE, UNLESS THE INTENDED FUNCTION OF A SPECIFIC AREA OF THE SITE DICTATES THAT THE TOPSOIL BE DISTURBED OR REMOVED, OR IT IS INFEASIBLE; AND
- MINIMIZE SOIL COMPACTION. IN AREAS OF THE CONSTRUCTION SITE WHERE FINAL VEGETATIVE STABILIZATION MUST OCCUR OR WHERE INFILTRATION PRACTICES MUST BE INSTALLED, EITHER:

- RESTRICT VEHICLE AND EQUIPMENT USE TO AVOID SOIL COMPACTION; OR
- PRIOR TO SEEDING OR PLANTING AREAS OF EXPOSED SOIL THAT HAVE BEEN COMPACTED, USE TECHNIQUES THAT CONDITION THE SOILS TO SUPPORT VEGETATIVE GROWTH, IF NECESSARY AND FEASIBLE;

- MINIMIZING SOIL COMPACTION IS NOT REQUIRED WHERE THE INTENDED FUNCTION OF A SPECIFIC AREA OF THE SITE DICTATES THAT IT BE COMPACTED.

- MDEQ DOES NOT CONSIDER STORMWATER CONTROL FEATURES (E.G., STORMWATER CONVEYANCE CHANNELS, STORM DRAIN INLETS, SEDIMENT BASINS) TO CONSTITUTE "SURFACE WATER" FOR THE PURPOSES OF TRIGGERING THE BUFFER REQUIREMENT ABOVE.

2. SOIL STABILIZATION. STABILIZATION OF DISTURBED AREAS MUST, AT A MINIMUM, BE INITIATED IMMEDIATELY WHENEVER ANY CLEARING, GRADING, EXCAVATING, OR OTHER EARTH DISTURBING ACTIVITIES HAVE PERMANENTLY CEASED ON ANY PORTION OF THE SITE, OR TEMPORARILY CEASED ON ANY PORTION OF THE SITE AND MUST NOT RESUME FOR A PERIOD EXCEEDING 14 CALENDAR DAYS. IN THE CONTEXT OF THIS REQUIREMENT, "IMMEDIATELY" MEANS AS SOON AS PRACTICABLE, BUT NO LATER THAN THE END OF THE NEXT WORK DAY, FOLLOWING THE DAY WHEN THE EARTH-DISTURBING ACTIVITIES HAVE TEMPORARILY OR PERMANENTLY CEASED. TEMPORARY STABILIZATION MUST BE COMPLETED NO MORE THAN 14 CALENDAR DAYS AFTER INITIATION OF SOIL STABILIZATION MEASURES, AND FINAL STABILIZATION MUST BE ACHIEVED PRIOR TO TERMINATION OF PERMIT COVERAGE. IN ARID, SEMI-ARID, AND DROUGHT-STRICKEN AREAS WHERE INITIATING VEGETATIVE STABILIZATION MEASURES IMMEDIATELY IS INFEASIBLE, ALTERNATIVE NON-VEGETATIVE STABILIZATION MEASURES MUST BE EMPLOYED AS SOON AS PRACTICABLE. REFER TO ABOVE FOR COMPLETE EROSION CONTROL AND STABILIZATION PRACTICE REQUIREMENTS. IN LIMITED CIRCUMSTANCES, STABILIZATION MAY NOT BE REQUIRED IF THE INTENDED FUNCTION OF A SPECIFIC AREA OF THE SITE NECESSITATES THAT IT REMAIN DISTURBED.

3. DEWATERING. DISCHARGES FROM DEWATERING ACTIVITIES, INCLUDING DISCHARGES FROM DEWATERING OF TRENCHES AND EXCAVATIONS, ARE PROHIBITED, UNLESS MANAGED BY APPROPRIATE CONTROLS.

- UNDER NO CIRCUMSTANCES MUST THE DISCHARGE FROM THE ON-SITE DEWATERING BE DIRECTLY DISCHARGED OFFSITE.
- FILTER BAGS MAY BE UTILIZED (IF REQUIRED BY MDEQ ONSITE INSPECTORS) FOR ALL DEWATERING ACTIVITIES.
- IF DETERMINED NECESSARY, DEWATERING DURING EXCAVATING/BACKFILLING OPERATIONS MAY BE ACCOMPLISHED BY DITCHING AND THE USE OF SUMP PUMPS AND/OR OTHER METHOD (WELL POINTS), AS NECESSARY. CONTRACTOR TO OBTAIN ALL REQUIRED PERMITS FOR DEWATERING ACTIVITIES THAT MAY BE REQUIRED.
- UPON APPROVAL OF THE GEOTECHNICAL ENGINEER, THE EXCAVATED AREAS MAY BE BACKFILLED WITH CLEAN FINE SAND FREE OF UNSUITABLE OR DELETERIOUS MATERIAL. HOWEVER, THE FILL SHOULD NOT BE PLACED IN MORE THAN 6 INCHES OF STANDING WATER. ONCE THE FILL IS AT LEAST 2 FEET ABOVE THE DEWATERED LEVEL, BACKFILLING MAY PROCEED AS DIRECTED BY THE GEOTECHNICAL ENGINEER.

4. POLLUTION PREVENTION MEASURES. DESIGN, INSTALL, IMPLEMENT, AND MAINTAIN EFFECTIVE POLLUTION PREVENTION MEASURES TO MINIMIZE THE DISCHARGE OF POLLUTANTS. AT A MINIMUM, SUCH MEASURES MUST BE DESIGNED, INSTALLED, IMPLEMENTED, AND MAINTAINED TO:

- MINIMIZE THE DISCHARGE OF POLLUTANTS FROM EQUIPMENT AND VEHICLE WASHING, WHEEL WASH WATER, AND OTHER WASH WATERS. WASH WATERS MUST BE TREATED IN A SEDIMENT BASIN OR ALTERNATIVE CONTROL THAT PROVIDES EQUIVALENT OR BETTER TREATMENT PRIOR TO DISCHARGE;
- MINIMIZE THE EXPOSURE OF BUILDING MATERIALS, BUILDING PRODUCTS, CONSTRUCTION WASTES, TRASH, LANDSCAPE MATERIALS, FERTILIZERS, PESTICIDES, HERBICIDES, DETERGENTS, SANITARY WASTE, AND OTHER MATERIALS PRESENT ON THE SITE TO PRECIPITATION AND TO STORMWATER;
- MINIMIZE THE EXPOSURE OF WASTE MATERIALS BY CLOSING WASTE CONTAINER LIDS AT THE END OF THE WORK DAY. FOR WASTE CONTAINERS THAT DO NOT HAVE LIDS WHERE THE CONTAINER ITSELF IS NOT SUFFICIENTLY SECURE ENOUGH TO PREVENT THE DISCHARGE OF POLLUTANTS A COVER AND COULD LEAK, THE PERMITTEE MUST PROVIDE EITHER A COVER (E.G., A TARP, PLASTIC SHEETING, TEMPORARY ROOF) TO MINIMIZE EXPOSURE OF WASTES TO PRECIPITATION, OR A SIMILARLY EFFECTIVE MEANS DESIGNED TO MINIMIZE THE DISCHARGE OF POLLUTANTS (E.G., SECONDARY CONTAINMENT) AND
- MINIMIZE THE DISCHARGE OF POLLUTANTS FROM SPILLS AND LEAKS, AND IMPLEMENT CHEMICAL SPILL AND LEAK PREVENTION AND RESPONSE PROCEDURES.

5. PROHIBITED DISCHARGES. THE FOLLOWING DISCHARGES ARE PROHIBITED:

- WASTEWATER FROM WASH OUT OF CONCRETE, UNLESS MANAGED BY AN APPROPRIATE CONTROL;
- WASTEWATER FROM WASH OUT AND CLEANOUT OF STUCCO, PAINT, FORM RELEASE OILS, CURING COMPOUNDS AND OTHER CONSTRUCTION MATERIALS;
- FUELS, OILS, OR OTHER POLLUTANTS USED IN VEHICLE AND EQUIPMENT OPERATION AND MAINTENANCE;
- SOAPS OR SOLVENTS USED IN VEHICLE AND EQUIPMENT WASHING; AND
- TOXIC OR HAZARDOUS SUBSTANCES FROM A SPILL OR OTHER RELEASE.

6. SURFACE OUTLETS. WHEN DISCHARGING FROM BASINS AND IMPOUNDMENTS, UTILIZE OUTLET STRUCTURES THAT WITHDRAW WATER FROM THE SURFACE, UNLESS INFEASIBLE.

**SEQUENCE OF MAJOR ACTIVITIES**

THE ORDER OF CONSTRUCTION IS AS FOLLOWS:

1. RECEIVE NPDES COVERAGE FROM MDEQ.
2. PRE-CONSTRUCTION MEETING.
3. NOTIFY MDEQ OFFICE 48 HOURS PRIOR TO BEGINNING LAND DISTURBING ACTIVITIES.
4. CALL JULIE 811 SERVICES AT 1-601-362-4374 A MINIMUM OF 72 HOURS PRIOR TO BEGINNING OF CONSTRUCTION.
5. INSTALLATION OF CONSTRUCTION ENTRANCES/EXITS WITH CONCRETE WASHOUTS AT DESIGNATED LOCATIONS SHOWN ON THE SITE PLANS.
6. CLEARING, DISCING, AND GRUBBING ONLY AS NECESSARY FOR INSTALLATION OF PERIMETER EROSION CONTROL MEASURES.
7. INSTALLATION OF SILT FENCE, COMPOST FILTER SOCK, AND TEMPORARY SEDIMENTATION BASINS.
8. ROUGH GRADING FOR INSTALLATION OF ACCESS ROADS, LAYDOWN AND O&M AREAS, AND PERMANENT FENCE.
9. INSTALLATION OF PROPOSED LOW WATER CROSSINGS AND PROPOSED CULVERTS AND GRADING OF PROPOSED ACCESS ROADS AS SHOWN ON PLANS.
10. FINE GRADING AND INSTALLATION OF SOLAR ARRAY PANELS. CONTRACTOR SHALL GRADE SITE TO DRAIN AND PREVENT FONDING.
11. PERMANENT SEEDING AND FINAL STABILIZATION OF TOTAL DISTURBED AREA.
12. REMOVAL OF TEMPORARY EROSION CONTROL MEASURES AFTER ENTIRE AREA DRAINING TO THE STRUCTURE IS STABILIZED.
13. SUBMIT NOTICE OF TERMINATION (NOT) TO MDEQ AS APPROPRIATE.

**TIMING OF CONTROL MEASURES**

EROSION CONTROL MEASURES SHALL BE INSTALLED AS SHOWN ON THE CONSTRUCTION DRAWINGS PRIOR TO BEGINNING CLEARING, DISCING, AND GRUBBING ACTIVITIES. UPON COMPLETION OF CONSTRUCTION, ALL REMAINING DISTURBED AREAS SHALL BE STABILIZED. REFER TO SWP3 FOR STABILIZATION REQUIREMENTS AND PROPOSED METHODS.

**PROPOSED CULVERT TABLE**

1. PROPOSED CULVERT INVERTS TO MATCH EXISTING FLOW LINE. FOR CULVERTS PROPOSED IN EXISTING DITCHES, THE INTENT IS TO SET THE PIPE AT THE EXISTING DITCH INVERT TO ENSURE STORMWATER RUNOFF MAINTAINS ITS EXISTING DRAINAGE PATTERN.
2. CONTRACTOR SHALL VERIFY EXISTING GRADES PRIOR TO CONSTRUCTION AND SHALL REMOVE UNSUITABLE MATERIAL AND PREPARE THE PIPE BED AS NEEDED.
3. CULVERTS DESIGNED FOR THE 10-YR 24-HR STORM EVENT.

PROPOSED CULVERT TABLE			
NAME	LENGTH (FT)	PIPE MATERIAL	INNER DIAMETER (IN)

**BILL OF MATERIALS**

1. THE TABLE BELOW PROVIDES APPROXIMATE TAKEOFF QUANTITIES FOR REFERENCE ONLY. CONTRACTOR MUST COMPLETE A DETAILED TAKEOFF ANALYSIS FOR THE PURPOSES OF COST ESTIMATING AND CONSTRUCTION.

BILL OF MATERIALS		
DESCRIPTION	UNIT	QUANTITY
PROJECT AREA	AC	1,239
LIMITS OF DISTURBANCE AREA	AC	620
SECURITY FENCED AREA	AC	705
SECURITY FENCE LENGTH	LF	39,650
GATE (24-FT)	EA	8
LAYDOWN & O&M AREAS	AC	2.5
INTERNAL ACCESS ROADS AREA	AC	23.0
INTERNAL ACCESS ROADS	LF	43,000
CONSTRUCTION ENTRANCES/EXITS WITH CONCRETE WASHOUT	EA	6
TEMPORARY SEDIMENT BASINS	EA	TBD
LOW WATER CROSSINGS	EA	TBD
CULVERTS	EA	TBD
COMPOST FILTER SOCK	LF	TBD
SILT FENCE	LF	TBD

**EARTHWORK ESTIMATE**

1. EARTHWORK IS A PRELIMINARY ESTIMATE ONLY AND SHOULD BE USED FOR REFERENCE. IT IS THE CONTRACTOR'S RESPONSIBILITY TO COMPLETE A DETAILED EARTHWORK ANALYSIS FOR THE PURPOSES OF COST ESTIMATING AND CONSTRUCTION.
2. CUT AND FILL SOIL SHRINKAGE OR BULKING HAVE NOT BEEN CONSIDERED AS A PART OF THIS EARTHWORK ESTIMATE. PER GEOTECHNICAL ENGINEER'S RECOMMENDATIONS.
3. TOPSOIL STRIPPING HAS NOT BEEN CONSIDERED AS PART OF THIS EARTHWORK ESTIMATE. ALL TOPSOIL SHOULD BE STRIPPED AND STORED SEPARATELY FROM SUBSOILS AND RE-APPLIED TO ALL GRADED AREAS NOT RECEIVING A GRAVEL FINISHED SURFACE. POST-CONSTRUCTION, EXCESS SOILS SHOULD BE STORED ON-SITE WITHIN LOD OR HAULED OFF, PER CONTRACTOR'S DISCRETION.

EARTHWORK ESTIMATES			
AREA	CUT (CY)	FILL (CY)	NET (CY)



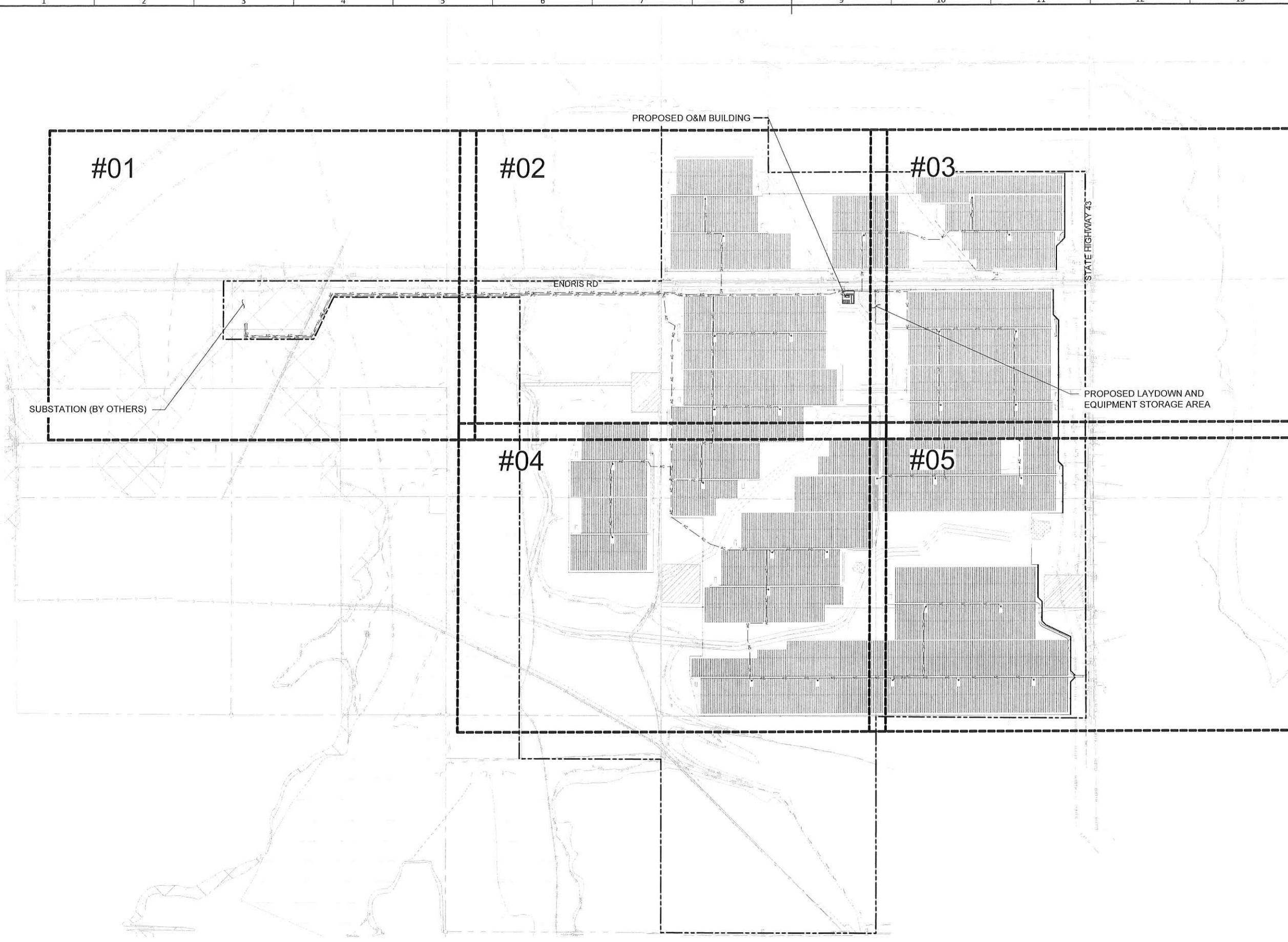
DATE			SCALE				RAGSDALE SOLAR FACILITY MADISON COUNTY, MS		Rev. A   Page: 3 of 15		
06/07			DRAWN MM							GENERAL NOTES	Drawing No: RAG1-C-002
06/07			CHECKED AH								
06/07			APPROVED DC			SIGNAL ENERGY	Proj. No: XXXXXXX   Doc. No:	Drawing No: RAG1-C-002			
Format ANSI D											
VER.	DATE	MODIFICATION	PAGES MODIFIED	VER.	DATE	MODIFICATION	PAGES MODIFIED				
A	06/07/2023	30% CIVIL DESIGN	#								

C:\pwworking\kleinfelder\p01\genadio-allen@kleinfelder.com\d0227875\ragdale - Cover & General Notes.dwg - Jun 07, 2023 - 12:36pm



# LEGEND

- EXISTING MAJOR CONTOUR (5')
- EXISTING MINOR CONTOUR (1')
- EXISTING PROPERTY LINE
- EXISTING ADJACENT PROP. BOUNDARY
- EXISTING EASEMENT
- EXISTING FENCE
- EXISTING OVERHEAD ELECTRICAL
- EXISTING WATER CHANNEL
- EXISTING EDGE OF PAVED ROAD
- EXISTING RIGHT-OF-WAY
- EXISTING RAILROAD
- EXISTING GAS LINE
- EXISTING FIBER OPTICS LINE
- EXISTING UNDERGROUND TELEPHONE LINE
- EXISTING WATER LINE
- EXISTING 100-YEAR FEMA FLOODPLAIN "ZONE A" W/ 50-FT BUFFER
- EXISTING UTILITY POLE
- EXISTING SIGNAGE
- EXISTING SHRUB
- EXISTING WOODLAND AREA TO BE REMOVED
- LIMIT OF DISTURBANCE
- PROPOSED SILT FENCE
- PRELIMINARY FLOODSTUDY DEPTH (BY OTHERS)
- BUFFER LINE (50-FT WETLANDS, 50-FT CULTURAL, 25-FT FLOODPLAIN)
- 100-FT RESIDENTIAL SETBACK
- EXCLUSION AREA



C:\pwworking\kleinfelder\p01\genadio-allen@kleinfelder.com\d0227875\Ragsdale - Overall Key Map.dwg - Jun 07, 2023 - 12:36pm

VER.	DATE	MODIFICATION	PAGES MODIFIED	VER.	DATE	MODIFICATION	PAGES MODIFIED	Format ANSI D
A	06/07/2023	30% CIVIL DESIGN	#					

DATE	SCALE	1" = 600'
06/07	DRAWN	MM
06/07	CHECKED	AH
06/07	APPROVED	DC



**RAGSDALE SOLAR FACILITY**  
MADISON COUNTY, MS

## OVERALL KEY MAP

Proj. N°: XXXXXXX Doc. N°:



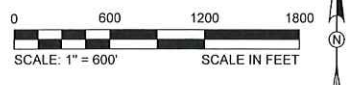
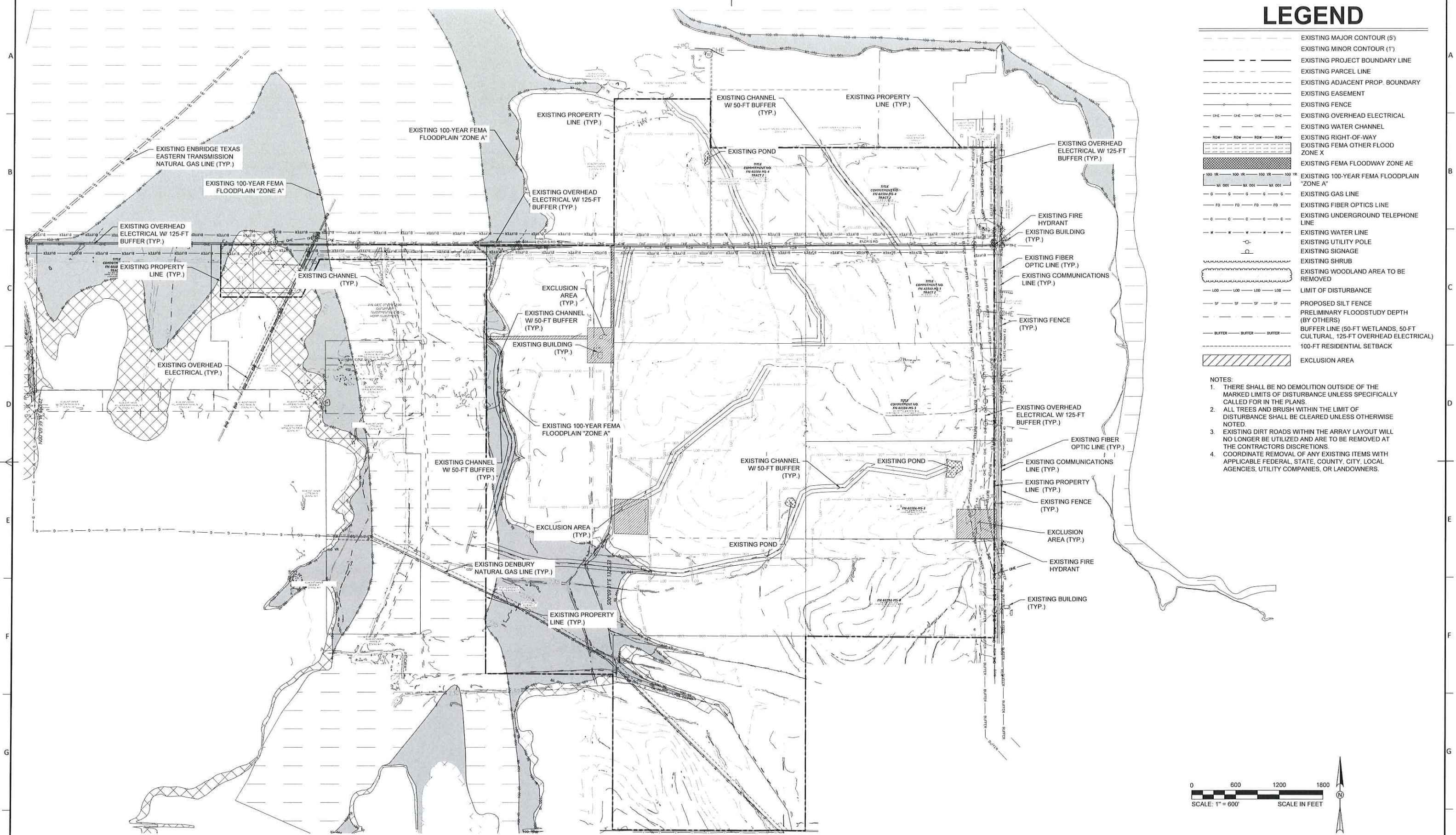
Rev. A Page: 4 of 15  
Drawing N°: RAG1-C-100



# LEGEND

- EXISTING MAJOR CONTOUR (5')
- EXISTING MINOR CONTOUR (1')
- EXISTING PROJECT BOUNDARY LINE
- EXISTING PARCEL LINE
- EXISTING ADJACENT PROP. BOUNDARY
- EXISTING EASEMENT
- EXISTING FENCE
- EXISTING OVERHEAD ELECTRICAL
- EXISTING WATER CHANNEL
- EXISTING RIGHT-OF-WAY
- EXISTING FEMA OTHER FLOOD ZONE X
- EXISTING FEMA FLOODWAY ZONE AE
- EXISTING 100-YEAR FEMA FLOODPLAIN "ZONE A"
- EXISTING GAS LINE
- EXISTING FIBER OPTICS LINE
- EXISTING UNDERGROUND TELEPHONE LINE
- EXISTING WATER LINE
- EXISTING UTILITY POLE
- EXISTING SIGNAGE
- EXISTING SHRUB
- EXISTING WOODLAND AREA TO BE REMOVED
- LIMIT OF DISTURBANCE
- PROPOSED SILT FENCE
- PRELIMINARY FLOODSTUDY DEPTH (BY OTHERS)
- BUFFER LINE (50-FT WETLANDS, 50-FT CULTURAL, 125-FT OVERHEAD ELECTRICAL)
- 100-FT RESIDENTIAL SETBACK
- EXCLUSION AREA

- NOTES:**
1. THERE SHALL BE NO DEMOLITION OUTSIDE OF THE MARKED LIMITS OF DISTURBANCE UNLESS SPECIFICALLY CALLED FOR IN THE PLANS.
  2. ALL TREES AND BRUSH WITHIN THE LIMIT OF DISTURBANCE SHALL BE CLEARED UNLESS OTHERWISE NOTED.
  3. EXISTING DIRT ROADS WITHIN THE ARRAY LAYOUT WILL NO LONGER BE UTILIZED AND ARE TO BE REMOVED AT THE CONTRACTORS DISCRETIONS.
  4. COORDINATE REMOVAL OF ANY EXISTING ITEMS WITH APPLICABLE FEDERAL, STATE, COUNTY, CITY, LOCAL AGENCIES, UTILITY COMPANIES, OR LANDOWNERS.



								DATE		SCALE 1" = 600'			<b>RAGSDALE SOLAR FACILITY</b> MADISON COUNTY, MS		 <b>REVAMP</b> ENGINEERING, INC.				
								06/07		DRAWN MM									
								06/07		CHECKED AH									
								06/07		APPROVED DC				Rev. A   Page: 5 of 15					
VER. DATE MODIFICATION				PAGES MODIFIED VER. DATE MODIFICATION				Format ANSI D		Signal Energy		Proj. No: XXXXXX Doc. No:		Drawing No: RAG1-C-200					
1				5				10				13				15			

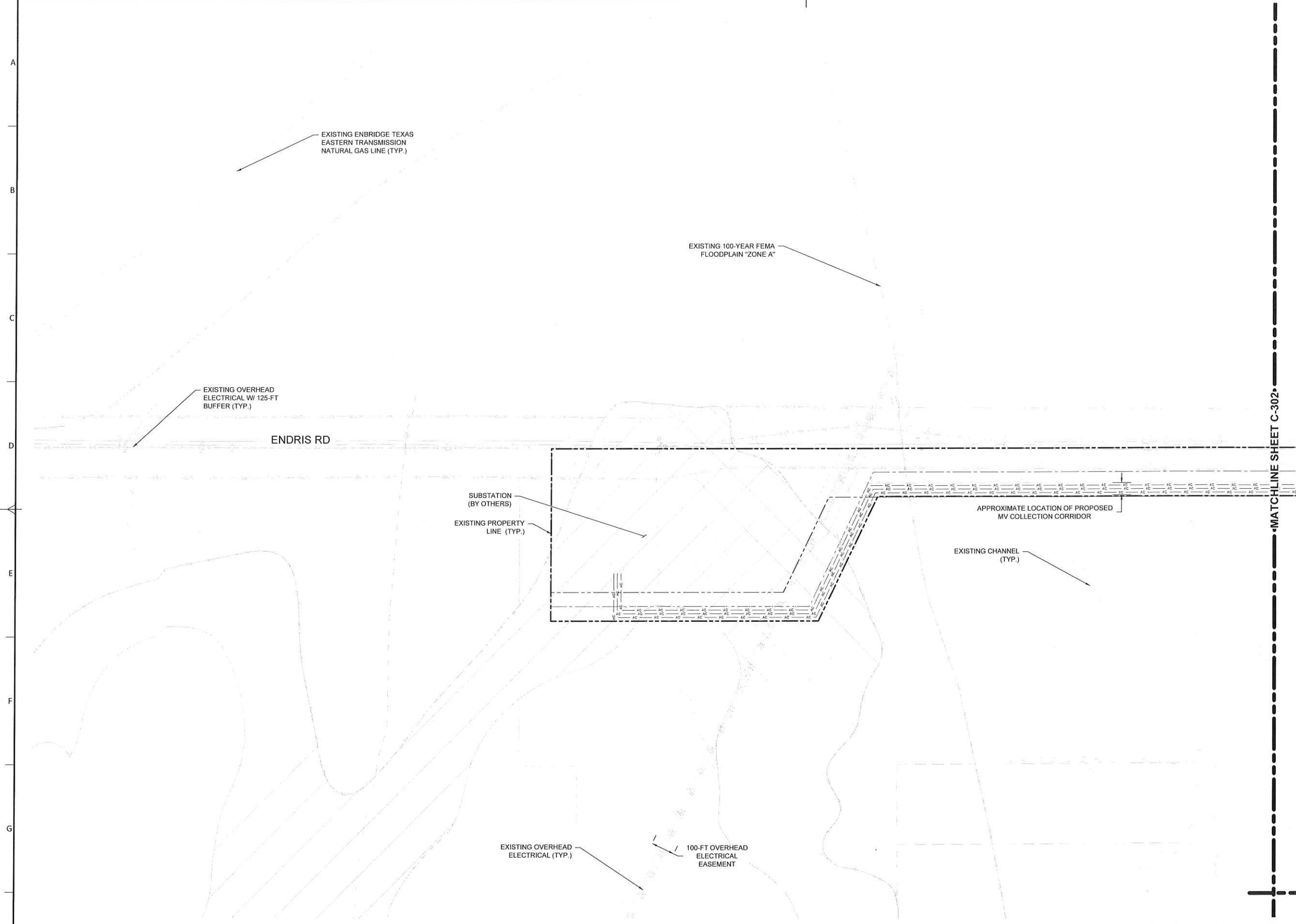
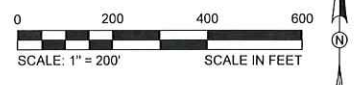
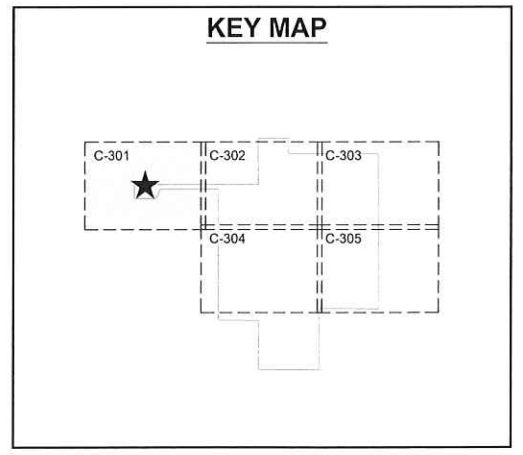
C:\working\kleinfelder\01\genadio-allen@kleinfelder.com\60227875\Ragsdale - Existing Conditions & Demolition Plan.dwg - Jun 07, 2023 - 12:53pm



# LEGEND


- EXISTING MAJOR CONTOUR (5')
- EXISTING MINOR CONTOUR (1')
- EXISTING PROPERTY LINE
- EXISTING ADJACENT PROP. BOUNDARY
- EXISTING EASEMENT
- EXISTING FENCE
- EXISTING OVERHEAD ELECTRICAL
- EXISTING WATER CHANNEL
- EXISTING EDGE OF PAVED ROAD
- EXISTING RIGHT-OF-WAY
- EXISTING FEMA OTHER FLOOD ZONE X
- EXISTING FEMA FLOODWAY ZONE AE
- EXISTING 100-YEAR FEMA FLOODPLAIN "ZONE A"
- EXISTING GAS LINE
- EXISTING FIBER OPTICS LINE
- EXISTING UNDERGROUND TELEPHONE LINE
- EXISTING WATER LINE
- EXISTING UTILITY POLE
- EXISTING SIGNAGE
- EXISTING SHRUB
- LIMIT OF DISTURBANCE
- PROPOSED SILT FENCE
- PROPOSED AC ELECTRICAL LINE
- BUFFER LINE (50-FT WETLANDS, 50-FT CULTURAL, 125-FT OVERHEAD ELECTRICAL)
- 100-FT RESIDENTIAL SETBACK
- EXCLUSION AREA

- NOTES:
1. ALL ACCESS ROAD INSIDE RADII ARE 54-FT UNLESS OTHERWISE NOTED ON PLAN.
  2. SEPARATION BETWEEN ARRAY AND PROPOSED SECURITY FENCE MUST BE A MINIMUM OF 19-FT, PER CONTRACTOR DISCRETION.
  3. ADDITIONAL GRAVEL FOR WB-67 DELIVERY ACCESS TO BE ADDED AT CONTRACTOR DISCRETION.
  4. PROPOSED UNDERGROUND AC WIRES, DC WIRES, AND CAB SYSTEM SHOWN ARE FOR ILLUSTRATION PURPOSES ONLY. SEE ELECTRICAL PLANS (BY OTHERS) FOR MORE DETAIL.




VER.	DATE	MODIFICATION	PAGES MODIFIED	VER.	DATE	MODIFICATION	PAGES MODIFIED
A	06/07/2023	30% CIVIL DESIGN	#				

DATE	SCALE 1" = 200'
06/07	DRAWN MM
06/07	CHECKED AH
06/07	APPROVED DC



**RAGSDALE SOLAR FACILITY**  
MADISON COUNTY, MS

**SITE PLAN**



Rev. A Page: 6 of 15

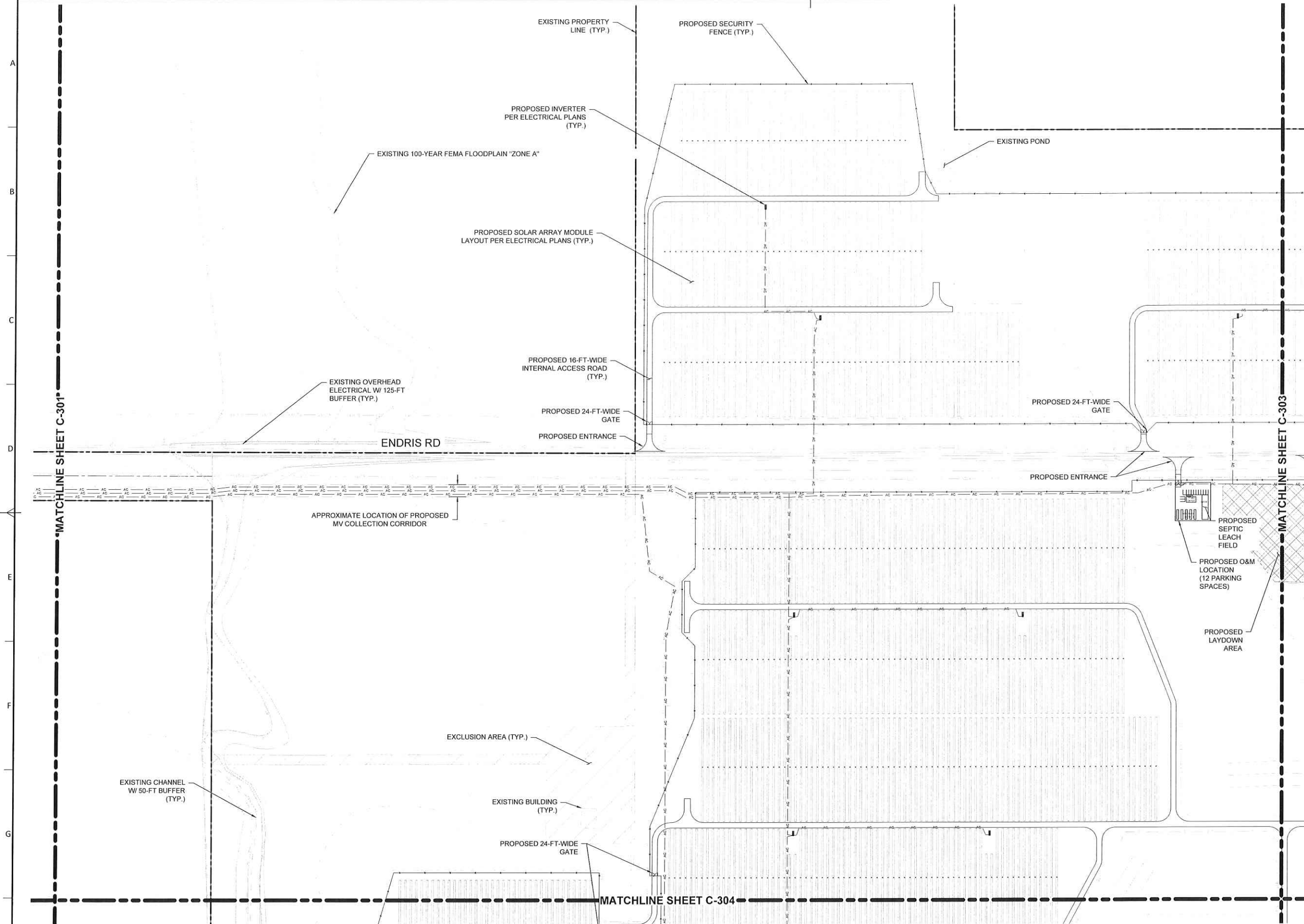
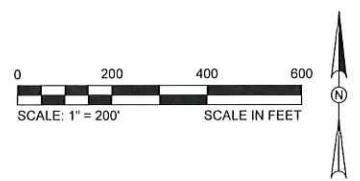
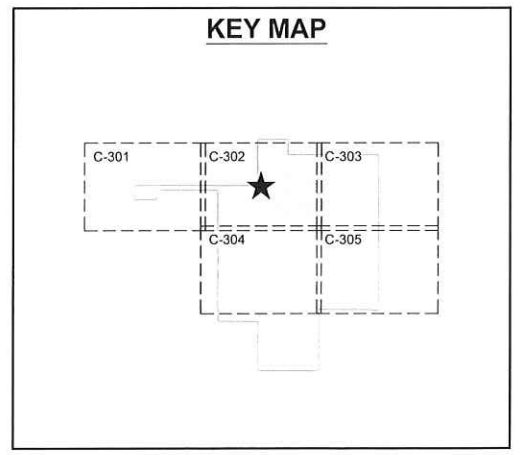
Proj. N#: XXXXXXX
Doc. N#:
Drawing N#: RAG1-C-301

C:\working\Kleinfelder\p01\jenniferalien@kleinfelder.com\100227875\Ragsdale - Site Plan.dwg - Jun 07, 2023 - 12:37 pm

# LEGEND

- EXISTING MAJOR CONTOUR (5')
- EXISTING MINOR CONTOUR (1')
- EXISTING PROPERTY LINE
- EXISTING ADJACENT PROP. BOUNDARY
- EXISTING EASEMENT
- EXISTING FENCE
- EXISTING OVERHEAD ELECTRICAL
- EXISTING WATER CHANNEL
- EXISTING EDGE OF PAVED ROAD
- EXISTING RIGHT-OF-WAY
- EXISTING FEMA OTHER FLOOD ZONE X
- EXISTING FEMA FLOODWAY ZONE AE
- EXISTING 100-YEAR FEMA FLOODPLAIN "ZONE A"
- EXISTING GAS LINE
- EXISTING FIBER OPTICS LINE
- EXISTING UNDERGROUND TELEPHONE LINE
- EXISTING WATER LINE
- EXISTING UTILITY POLE
- EXISTING SIGNAGE
- EXISTING SHRUB
- LIMIT OF DISTURBANCE
- PROPOSED SILT FENCE
- PROPOSED AC ELECTRICAL LINE
- BUFFER LINE (50-FT WETLANDS, 50-FT CULTURAL, 125-FT OVERHEAD ELECTRICAL)
- 100-FT RESIDENTIAL SETBACK
- EXCLUSION AREA

- NOTES:
1. ALL ACCESS ROAD INSIDE RADI ARE 54-FT UNLESS OTHERWISE NOTED ON PLAN.
  2. SEPARATION BETWEEN ARRAY AND PROPOSED SECURITY FENCE MUST BE A MINIMUM OF 19-FT, PER CONTRACTOR DISCRETION.
  3. ADDITIONAL GRAVEL FOR WB-67 DELIVERY ACCESS TO BE ADDED AT CONTRACTOR DISCRETION.
  4. PROPOSED UNDERGROUND AC WIRES, DC WIRES, AND CAB SYSTEM SHOWN ARE FOR ILLUSTRATION PURPOSES ONLY. SEE ELECTRICAL PLANS (BY OTHERS) FOR MORE DETAIL.



VER.	DATE	MODIFICATION	PAGES MODIFIED	VER.	DATE	MODIFICATION	PAGES MODIFIED
A	06/07/2023	30% CIVIL DESIGN	#				

DATE	SCALE 1" = 200'
06/07	DRAWN MM
06/07	CHECKED AH
06/07	APPROVED DC

**SIGNAL ENERGY**

**RAGSDALE SOLAR FACILITY**  
MADISON COUNTY, MS

**SITE PLAN**

Proj. No: XXXXXXX Doc. No:

Rev. A Page: 7 of 15

Drawing No: RAG1-C-302

C:\working\kiefelder\p01\genradio-allen@kiefelder.com\0027875\ragdale - Site Plan.dwg - Jun 07, 2023 - 12:37pm



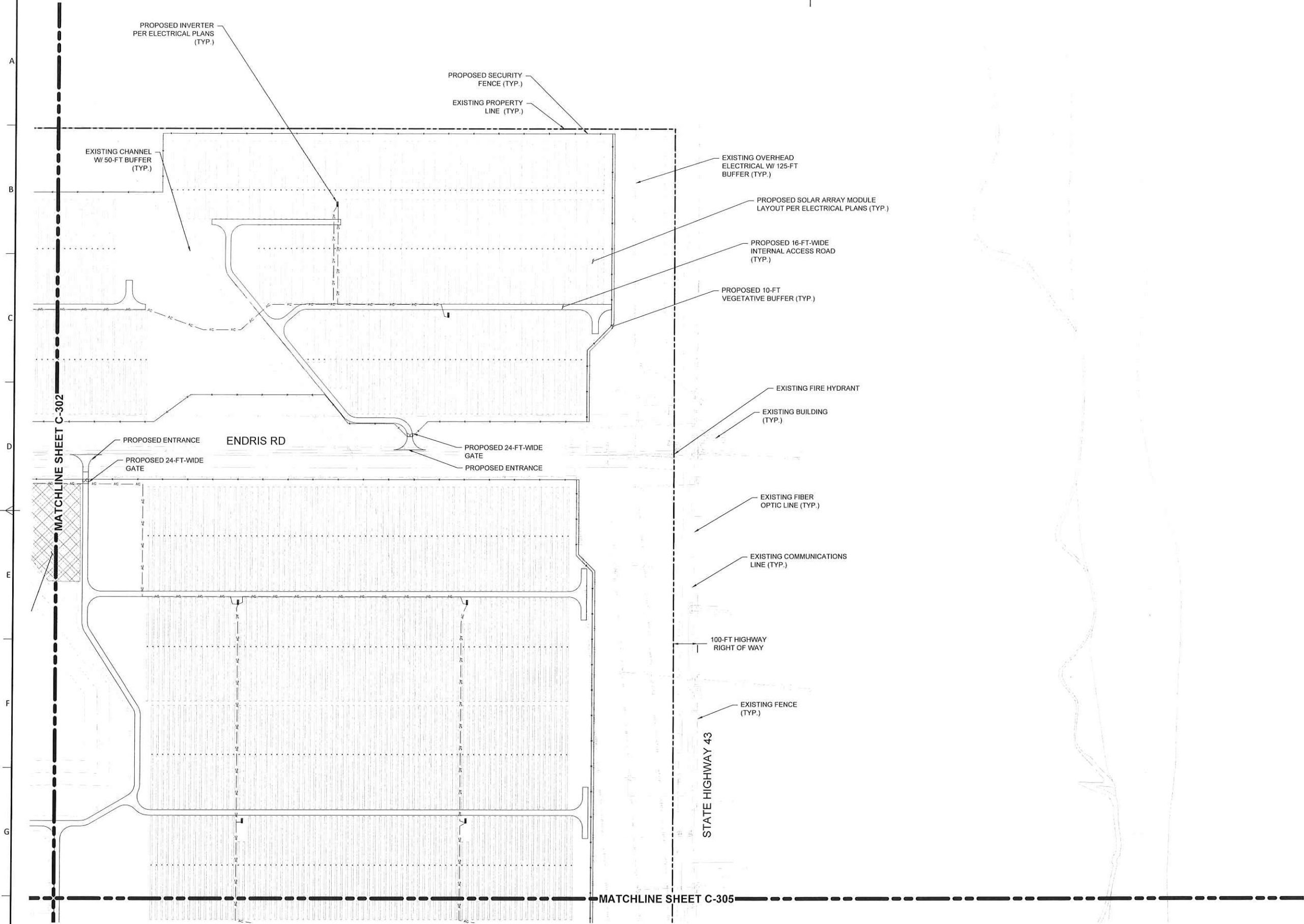
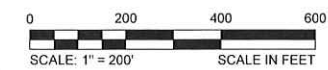
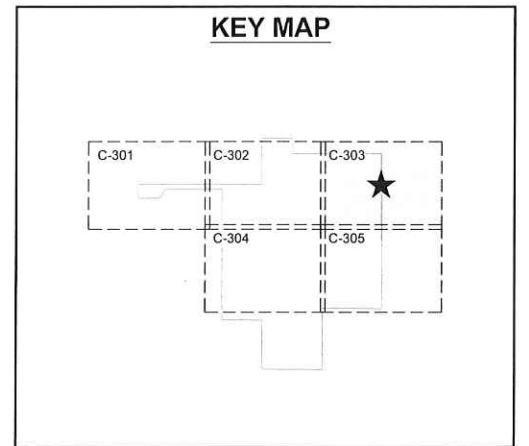
# LEGEND

	EXISTING MAJOR CONTOUR (5')
	EXISTING MINOR CONTOUR (1')
	EXISTING PROPERTY LINE
	EXISTING ADJACENT PROP. BOUNDARY
	EXISTING EASEMENT
	EXISTING FENCE
	EXISTING OVERHEAD ELECTRICAL
	EXISTING WATER CHANNEL
	EXISTING EDGE OF PAVED ROAD
	EXISTING RIGHT-OF-WAY
	EXISTING FEMA OTHER FLOOD ZONE X
	EXISTING FEMA FLOODWAY ZONE AE
	EXISTING 100-YEAR FEMA FLOODPLAIN "ZONE A"
	EXISTING GAS LINE
	EXISTING FIBER OPTICS LINE
	EXISTING UNDERGROUND TELEPHONE LINE
	EXISTING WATER LINE
	EXISTING UTILITY POLE
	EXISTING SIGNAGE
	EXISTING SHRUB
	LIMIT OF DISTURBANCE
	PROPOSED SILT FENCE
	PROPOSED AC ELECTRICAL LINE
	BUFFER LINE (50-FT WETLANDS, 50-FT CULTURAL, 125-FT OVERHEAD ELECTRICAL)
	100-FT RESIDENTIAL SETBACK
	EXCLUSION AREA

**NOTES:**

- ALL ACCESS ROAD INSIDE RADII ARE 54-FT UNLESS OTHERWISE NOTED ON PLAN.
- SEPARATION BETWEEN ARRAY AND PROPOSED SECURITY FENCE MUST BE A MINIMUM OF 19-FT, PER CONTRACTOR DISCRETION.
- ADDITIONAL GRAVEL FOR WB-67 DELIVERY ACCESS TO BE ADDED AT CONTRACTOR DISCRETION.
- PROPOSED UNDERGROUND AC WIRES, DC WIRES, AND CAB SYSTEM SHOWN ARE FOR ILLUSTRATION PURPOSES ONLY. SEE ELECTRICAL PLANS (BY OTHERS) FOR MORE DETAIL.

## KEY MAP



										DATE		SCALE 1" = 200'			RAGSDALE SOLAR FACILITY			
										06/07		DRAWN MM			MADISON COUNTY, MS			
										06/07		CHECKED AH			SITE PLAN			
																Rev. A		Page: 8 of 15
VER.	DATE	MODIFICATION			PAGES MODIFIED	VER.	DATE	MODIFICATION			PAGES MODIFIED	Format ANSI D	SIGNAL ENERGY		Proj. N°: XXXXXXX	Doc. N°:	Drawing N°: RAG1-C-303	
1																		

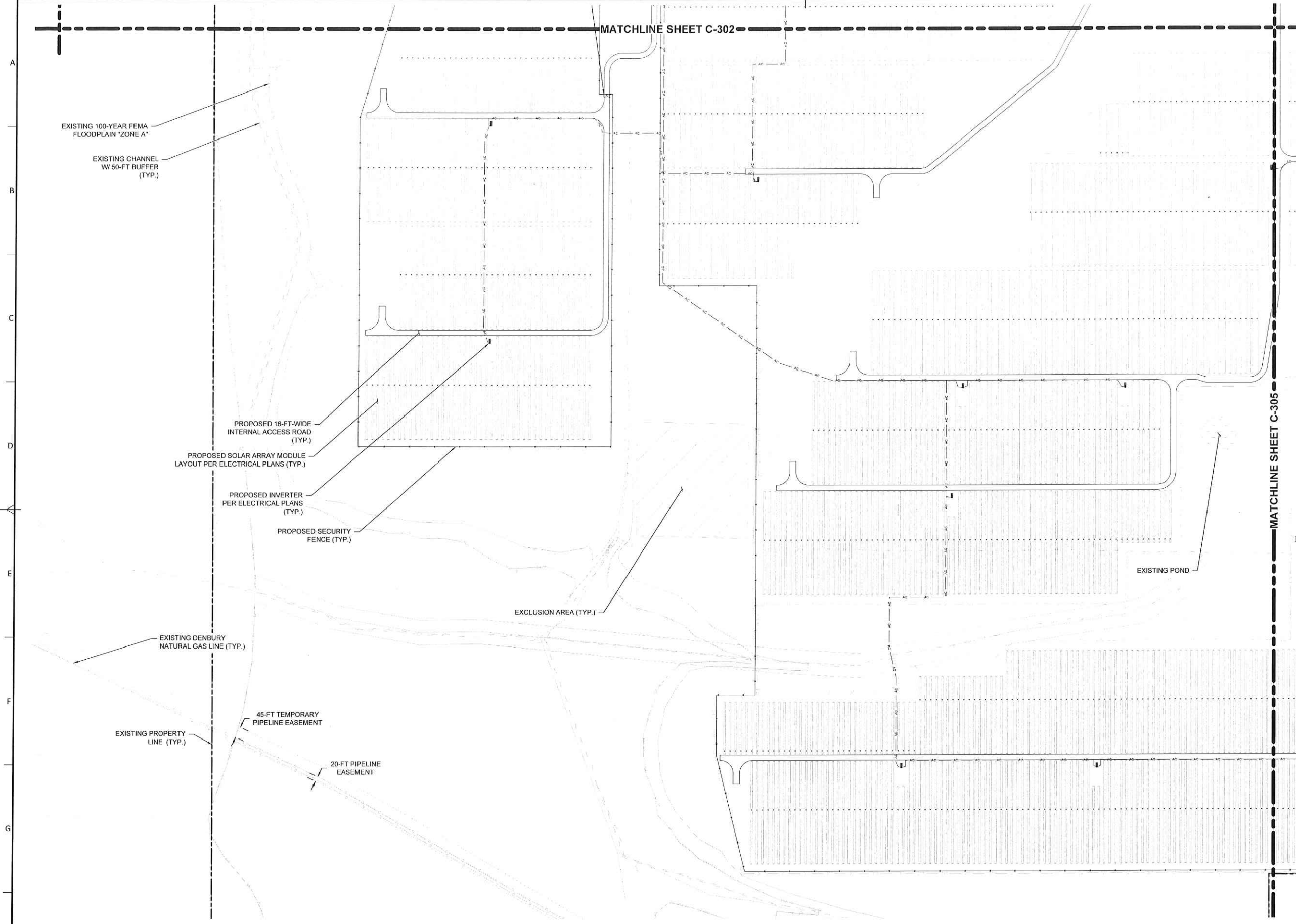
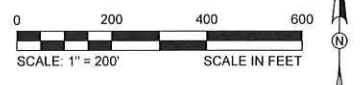
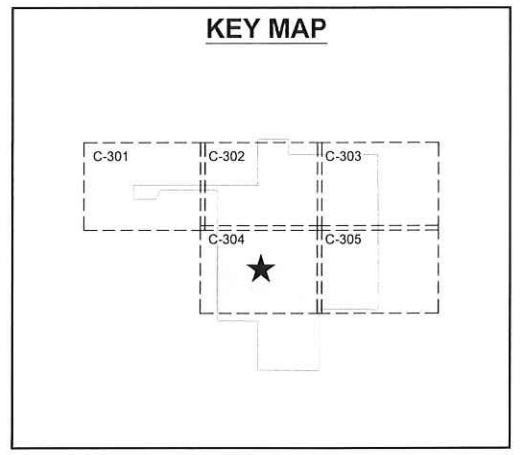
C:\Users\Allen\AppData\Local\Temp\AcPublish\_388241\Ragsdale - Site Plan.dwg - Jun 07, 2023 - 1:05pm



# LEGEND

- EXISTING MAJOR CONTOUR (5')
- EXISTING MINOR CONTOUR (1')
- EXISTING PROPERTY LINE
- EXISTING ADJACENT PROP. BOUNDARY
- EXISTING EASEMENT
- EXISTING FENCE
- EXISTING OVERHEAD ELECTRICAL
- EXISTING WATER CHANNEL
- EXISTING EDGE OF PAVED ROAD
- EXISTING RIGHT-OF-WAY
- EXISTING FEMA OTHER FLOOD ZONE X
- EXISTING FEMA FLOODWAY ZONE AE
- EXISTING 100-YEAR FEMA FLOODPLAIN "ZONE A"
- EXISTING GAS LINE
- EXISTING FIBER OPTICS LINE
- EXISTING UNDERGROUND TELEPHONE LINE
- EXISTING WATER LINE
- EXISTING UTILITY POLE
- EXISTING SIGNAGE
- EXISTING SHRUB
- LIMIT OF DISTURBANCE
- PROPOSED SILT FENCE
- PROPOSED AC ELECTRICAL LINE
- BUFFER LINE (50-FT WETLANDS, 50-FT CULTURAL, 125-FT OVERHEAD ELECTRICAL)
- 100-FT RESIDENTIAL SETBACK
- EXCLUSION AREA

- NOTES:**
1. ALL ACCESS ROAD INSIDE RADII ARE 54-FT UNLESS OTHERWISE NOTED ON PLAN.
  2. SEPARATION BETWEEN ARRAY AND PROPOSED SECURITY FENCE MUST BE A MINIMUM OF 19-FT, PER CONTRACTOR DISCRETION.
  3. ADDITIONAL GRAVEL FOR WB-67 DELIVERY ACCESS TO BE ADDED AT CONTRACTOR DISCRETION.
  4. PROPOSED UNDERGROUND AC WIRES, DC WIRES, AND CAB SYSTEM SHOWN ARE FOR ILLUSTRATION PURPOSES ONLY. SEE ELECTRICAL PLANS (BY OTHERS) FOR MORE DETAIL.



VER.	DATE	MODIFICATION	PAGES MODIFIED	VER.	DATE	MODIFICATION	PAGES MODIFIED	Format ANSI D
A	06/07/2023	30% CIVIL DESIGN	#					

DATE	SCALE 1" = 200'
06/07	DRAWN MM
06/07	CHECKED AH
06/07	APPROVED DC



**RAGSDALE SOLAR FACILITY**  
MADISON COUNTY, MS

## SITE PLAN

Proj. No: XXXXXXX Doc. No:



Rev. A Page: 9 of 15

Drawing No: RAG1-C-304

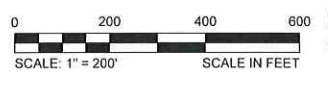
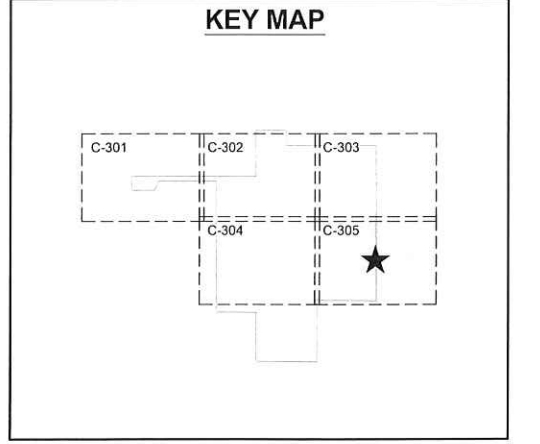
C:\working\kleinfelder\p01\geninfo\allen@kleinfelder.com\0227875\ragdale - Site Plan.dwg - Jun 07, 2023 - 12:37pm



# LEGEND

- EXISTING MAJOR CONTOUR (5')
- EXISTING MINOR CONTOUR (1')
- EXISTING PROPERTY LINE
- EXISTING ADJACENT PROP. BOUNDARY
- EXISTING EASEMENT
- EXISTING FENCE
- EXISTING OVERHEAD ELECTRICAL
- EXISTING WATER CHANNEL
- EXISTING EDGE OF PAVED ROAD
- EXISTING RIGHT-OF-WAY
- EXISTING FEMA OTHER FLOOD ZONE X
- EXISTING FEMA FLOODWAY ZONE AE
- EXISTING 100-YEAR FEMA FLOODPLAIN "ZONE A"
- EXISTING GAS LINE
- EXISTING FIBER OPTICS LINE
- EXISTING UNDERGROUND TELEPHONE LINE
- EXISTING WATER LINE
- EXISTING UTILITY POLE
- EXISTING SIGNAGE
- EXISTING SHRUB
- LIMIT OF DISTURBANCE
- PROPOSED SILT FENCE
- PROPOSED AC ELECTRICAL LINE
- BUFFER LINE (50-FT WETLANDS, 50-FT CULTURAL, 125-FT OVERHEAD ELECTRICAL)
- 100-FT RESIDENTIAL SETBACK
- EXCLUSION AREA

- NOTES:
1. ALL ACCESS ROAD INSIDE RADII ARE 54-FT UNLESS OTHERWISE NOTED ON PLAN.
  2. SEPARATION BETWEEN ARRAY AND PROPOSED SECURITY FENCE MUST BE A MINIMUM OF 19-FT, PER CONTRACTOR DISCRETION.
  3. ADDITIONAL GRAVEL FOR WB-67 DELIVERY ACCESS TO BE ADDED AT CONTRACTOR DISCRETION.
  4. PROPOSED UNDERGROUND AC WIRES, DC WIRES, AND CAB SYSTEM SHOWN ARE FOR ILLUSTRATION PURPOSES ONLY. SEE ELECTRICAL PLANS (BY OTHERS) FOR MORE DETAIL.



MATCHLINE SHEET C-303

STATE HIGHWAY 43

100-FT HIGHWAY RIGHT OF WAY

EXCLUSION AREA (TYP.)

EXISTING FIRE HYDRANT

PROPOSED 16-FT-WIDE INTERNAL ACCESS ROAD (TYP.)

PROPOSED SECURITY FENCE (TYP.)

PROPOSED ENTRANCE

EXISTING BUILDING (TYP.)

PROPOSED 24-FT-WIDE GATE

PROPOSED SOLAR ARRAY MODULE LAYOUT PER ELECTRICAL PLANS (TYP.)

PROPOSED 10-FT VEGETATIVE BUFFER (TYP.)

EXISTING OVERHEAD ELECTRICAL W/ 125-FT BUFFER (TYP.)

EXISTING FIBER OPTIC LINE (TYP.)

EXISTING COMMUNICATIONS LINE (TYP.)

EXISTING PROPERTY LINE (TYP.)

EXISTING FENCE (TYP.)

EXISTING POND

PROPOSED INVERTER PER ELECTRICAL PLANS (TYP.)

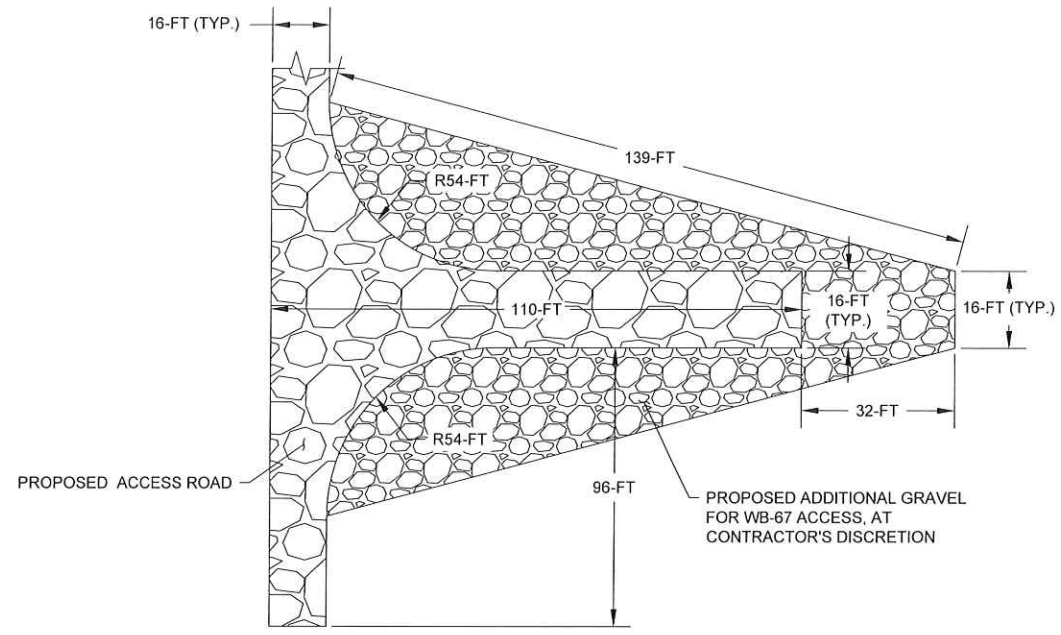
EXISTING CHANNEL W/ 50-FT BUFFER (TYP.)

MATCHLINE SHEET C-304

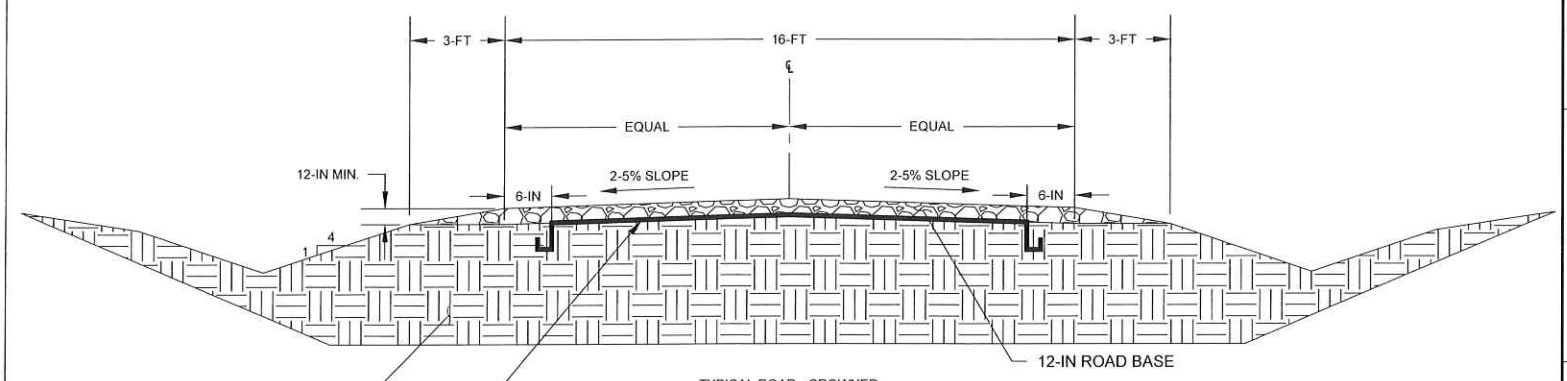
C:\Users\Allen\OneDrive\Documents\Projects\3882A\Revamp\Site Plan.dwg - Jun 07, 2023 - 1:05pm

VER. DATE MODIFICATION			PAGES MODIFIED VER. DATE MODIFICATION			DATE SCALE 1" = 200'		 <b>RAGSDALE SOLAR PARK</b> 	<b>RAGSDALE SOLAR FACILITY</b> MADISON COUNTY, MS  <b>SITE PLAN</b>	 <b>REVAMP</b> ENGINEERING, INC.	
						06/07	DRAWN MM			Rev. A Page: 10 of 15	
						06/07	CHECKED AH			Drawing No: RAG1-C-305	
						06/07	APPROVED DC			Proj. No: XXXXXXX Doc. No:	
VER.	DATE	MODIFICATION	PAGES MODIFIED	VER.	DATE	MODIFICATION	Format ANSI D				
1											
2											
3											
4											
5											
6											
7											
10											
11											
12											
13											
14											
15											
16											



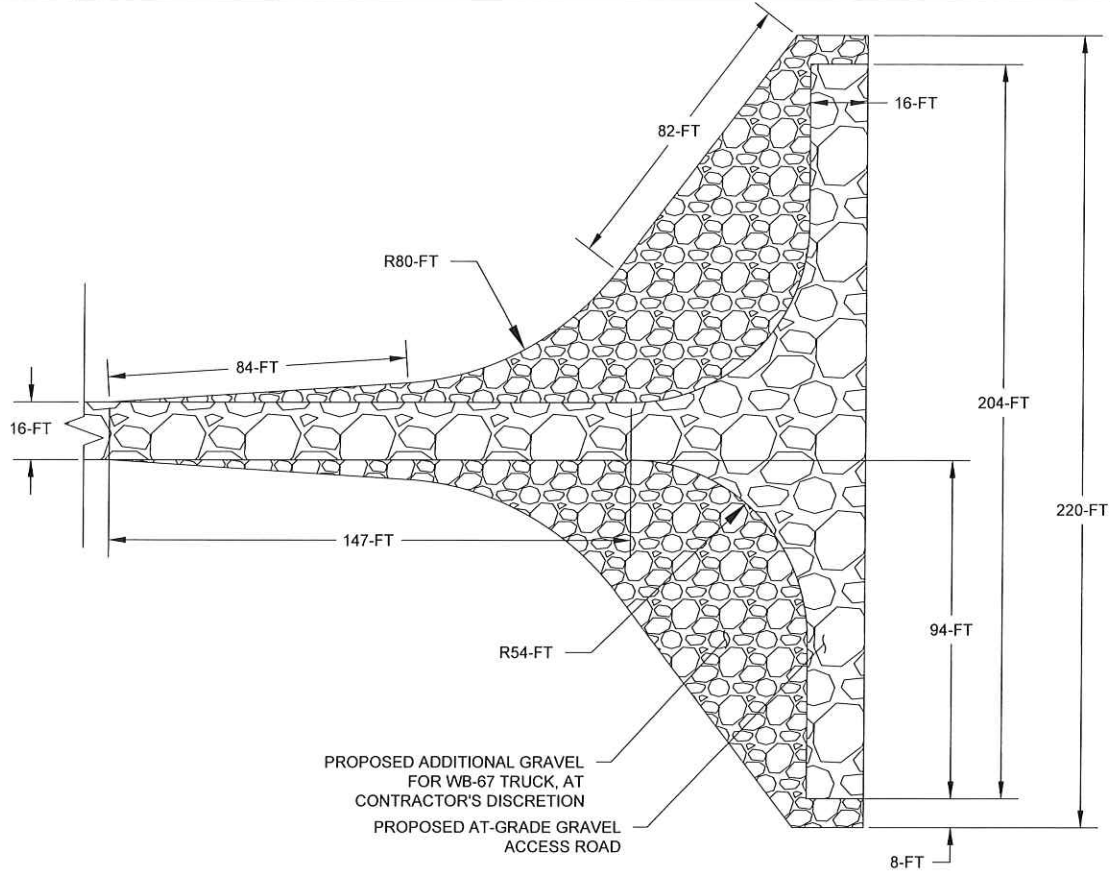


1 TYPICAL PERMANENT TURNAROUND - TYPE A  
NOT TO SCALE

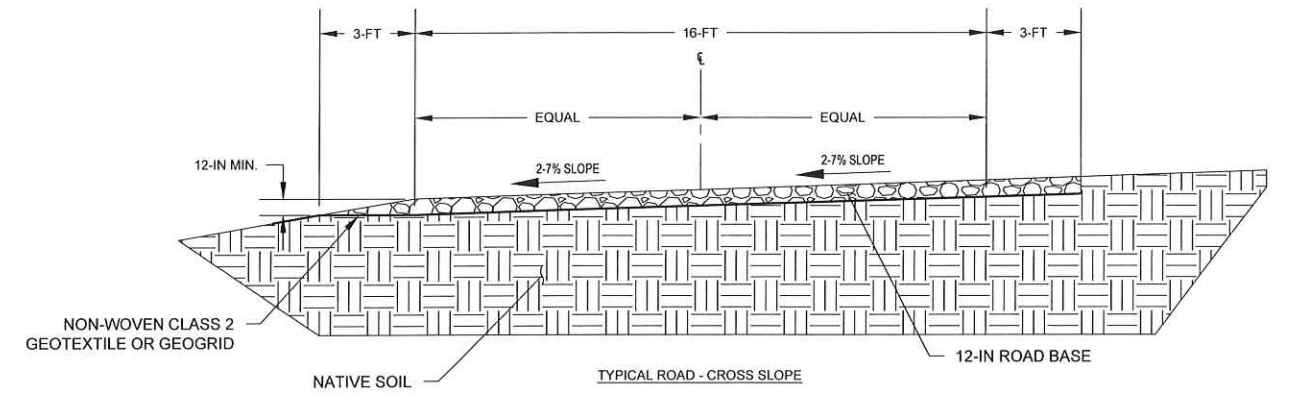


2 TYPICAL ROAD CROSS-SECTIONS - CROWNED  
NOT TO SCALE

NOTES:  
1. CROSS SLOPE ROAD MAY BE USED DURING CONSTRUCTION WHEN DRAINAGE IS PERPENDICULAR TO ROAD ALIGNMENT.  
2. EDGE OF ROAD SHALL TIE INTO EXISTING GRADES TO NOT IMPEDE FLOW. CONTRACTOR TO ENSURE POSITIVE DRAINAGE IS MAINTAINED.  
3. SHOULDER TO BE COMPACTED SIMILAR TO SUBGRADE, MIN 3' WIDE FROM ROAD WIDTH.  
4. SLOPE TO MATCH EXISTING. MAX LONGITUDINAL SLOPE IS 10%.



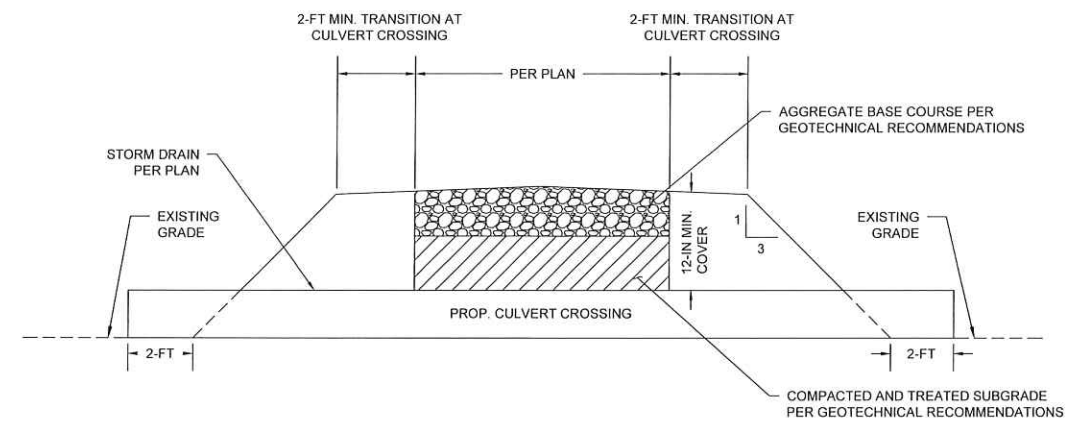
3 TYPICAL PERMANENT TURNAROUNDS - TYPE B  
NOT TO SCALE



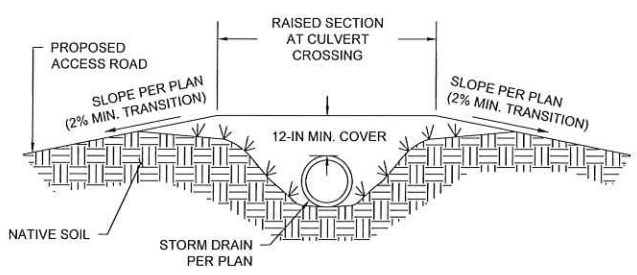
4 TYPICAL ROAD CROSS-SECTIONS - AT GRADE  
NOT TO SCALE

VER.		DATE		MODIFICATION		PAGES MODIFIED		VER.		DATE		MODIFICATION		PAGES MODIFIED		DATE		SCALE		DRAWN		MM		CHECKED		AH		APPROVED		DC		Format ANSI D		RAGSDALE SOLAR FACILITY MADISON COUNTY, MS		KLEINFELDER ENGINEERING, INC.		REVAMP		Rev. A		Page: 11 of 15	
A		06/07/2023		30% CIVIL DESIGN		#																												RAGSDALE SOLAR PARK		SIGNAL ENERGY		Proj. N°: XXXXXXX		Doc. N°:		Drawing N°: RAG1-C-401	
1		2		3		4		5		6		7		10		11		12		13		14		15		16																	

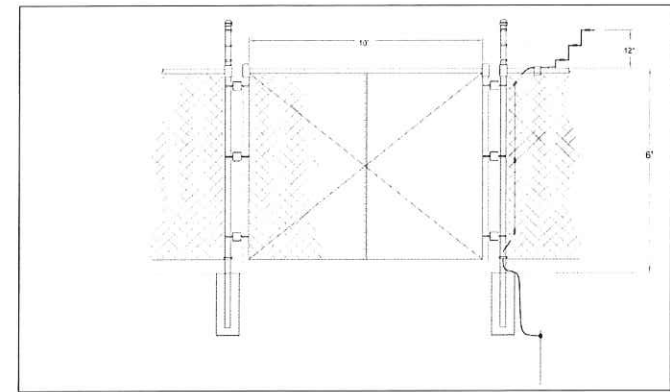




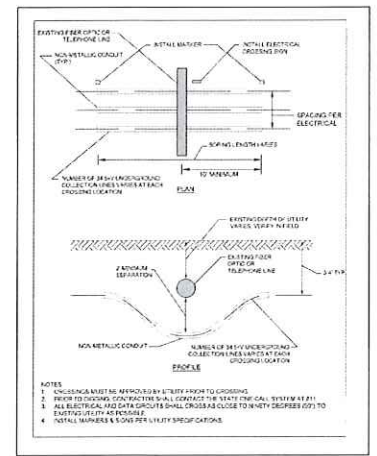
1 TYPICAL CULVERT CROSSING  
NOT TO SCALE



- NOTES:
1. PROPOSED CULVERT INVERTS TO MATCH EXISTING FLOW LINE. FOR CULVERTS PROPOSED IN EXISTING DITCHES, THE INTENT IS TO SET THE PIPE AT THE EXISTING DITCH INVERT TO ENSURE STORMWATER RUNOFF MAINTAINS ITS EXISTING DRAINAGE PATTERN.
  2. CONTRACTOR SHALL VERIFY EXISTING GRADES PRIOR TO CONSTRUCTION AND SHALL REMOVE UNSUITABLE MATERIAL AND PREPARE THE PIPE BED AS NEEDED.



2 FENCE - ISOLATION PANEL  
NOT TO SCALE

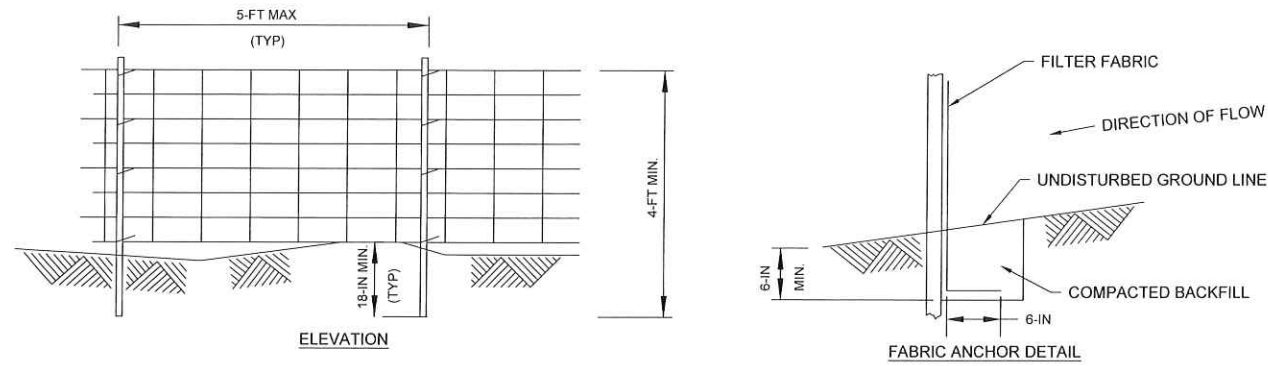


3 UTILITY CROSSING  
NOT TO SCALE

C:\pwworking\kiefelder\p01\genradio-atten@kiefelder.com\10227875\Ragsdale - Details.dwg - Jun 07, 2023 - 12:37pm

								DATE	SCALE		<b>RAGSDALE SOLAR FACILITY</b> MADISON COUNTY, MS  <b>SITE DETAILS</b>						
								06/07	DRAWN MM				Rev. A	Page: 12 of 15			
								06/07	CHECKED AH								
VER.	DATE	MODIFICATION				PAGES MODIFIED	VER.	DATE	MODIFICATION			PAGES MODIFIED	Format ANSI D	SIGNAL ENERGY	Proj. N°: XXXXXX	Doc. N°:	Drawing N°: RAG1-C-402
1																	



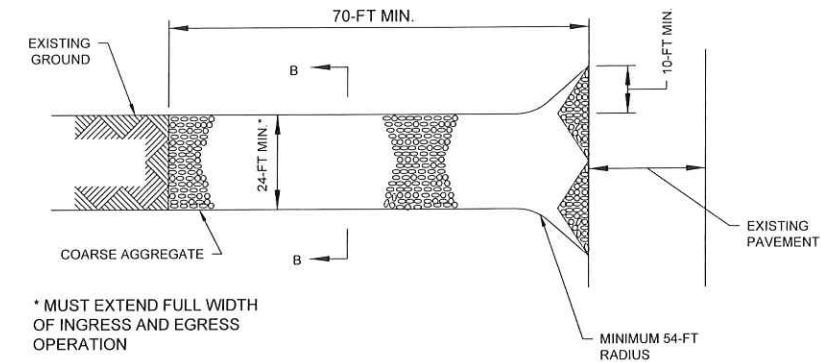


**NOTES:**

1. TEMPORARY SEDIMENT FENCE SHALL BE INSTALLED PRIOR TO ANY GRADING WORK IN THE AREA TO BE PROTECTED. THEY SHALL BE MAINTAINED THROUGHOUT THE CONSTRUCTION PERIOD AND REMOVED IN CONJUNCTION WITH THE FINAL GRADING.
2. FILTER FABRIC SHALL MEET THE REQUIREMENTS OF MATERIAL SPECIFICATION 592 GEOTEXTILE TABLE 1 OR 2, CLASS II.
3. FENCE POST SHALL BE WOOD POSTS 4 FEET IN LENGTH MINIMUM AND HAVE A NOMINAL CROSS SECTION OF 2 INCHES BY 4 INCHES FOR PINE OR 2 INCHES BY 2 INCHES FOR HARDWOODS.
4. IF SOIL CONDITIONS PREVENT A MINIMUM TOEIN DEPTH OF 6 INCHES OR INSTALLATION OF SUPPORT POST TO DEPTH OF 18 INCHES, SILT FENCES SHALL NOT BE USED.

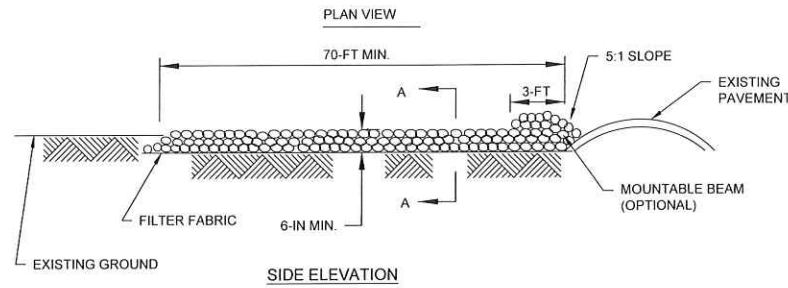
**1** SILT FENCE DETAIL

NOT TO SCALE

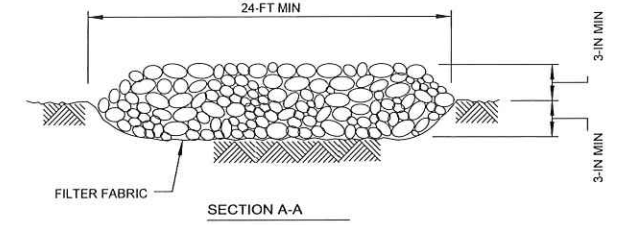


**NOTES:**

1. FILTER FABRIC SHALL MEET THE REQUIREMENTS OF MATERIAL SPECIFICATION 592 GEOTEXTILE, TABLE 1 OR 2, CLASS I, II, OR IV AND SHALL BE PLACED OVER THE CLEARED AREA PRIOR TO THE PLACING OF ROCK.
2. ROCK SHALL MEET ONE OF THE FOLLOWING GRADATIONS: AHTD AGGREGATE BASE COURSE CLASS 1, 2, OR 3, OR ASTM C33 COURSE AGGREGATE SIZE 1, 2, 3, 357, 4 OR 467 AND BE PLACED ACCORDING TO CONSTRUCTION SPECIFICATIONS 25 ROCKFILL USING PLACEMENT METHOD 1 AND CLASS III COMPACTION.

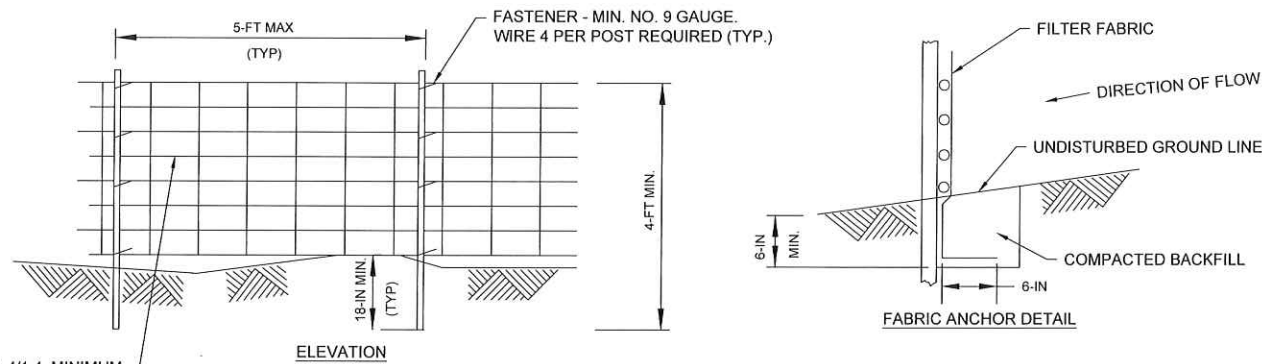


**OPTION 1**



**2** CONSTRUCTION ENTRANCE

NOT TO SCALE



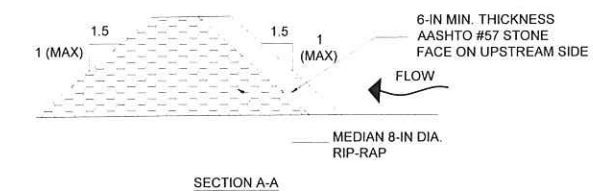
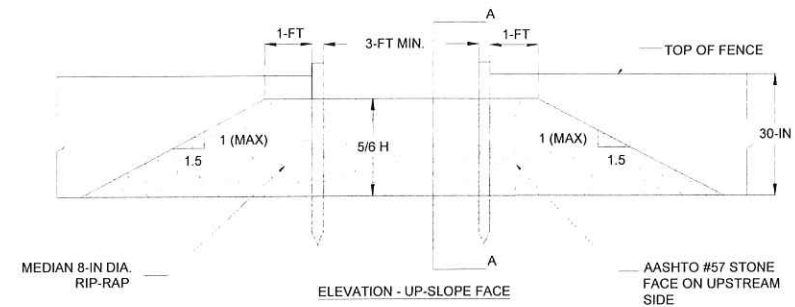
4-IN X 4-IN MESH SIZE, W1.4/H1.4, MINIMUM 14 GAUGE WIRE FENCE FABRIC

**NOTES:**

1. TEMPORARY SEDIMENT FENCE SHALL BE INSTALLED PRIOR TO ANY GRADING WORK IN THE AREA TO BE PROTECTED. THEY SHALL BE MAINTAINED THROUGHOUT THE CONSTRUCTION PERIOD AND REMOVED IN CONJUNCTION WITH THE FINAL GRADING.
2. FILTER FABRIC SHALL MEET THE REQUIREMENTS OF MATERIAL SPECIFICATION 592 GEOTEXTILE TABLE 1 OR 2, CLASS I WITH EQUIVALENT OPENING SIZE OF AT LEAST 30 FOR NONWOVEN AND 50 FOR WOVEN.
3. FENCE POST SHALL BE STEEL AND MAY BE T-SECTION OR L-SECTION, 1.3 POUNDS PER LINEAR FOOT MINIMUM, AND 4 FEET IN LENGTH MINIMUM. WOOD POSTS MAY BE USED DEPENDING ON ANTICIPATED LENGTH OF SERVICE AND PROVIDED THEY ARE 4 FEET IN LENGTH MINIMUM AND HAVE A NOMINAL CROSS SECTION OF 2 INCHES BY 4 INCHES FOR PINE OR 2 INCHES BY 2 INCHES FOR HARDWOODS.
4. SILT FENCE SHALL CONSIST OF SYNTHETIC FABRIC SUPPORTED BY WIRE MESH AND STEEL POSTS SET A MINIMUM OF 18 INCHES DEPTH AND SPACED NOT MORE THAN 5 FEET ON CENTER.
5. IF SOIL CONDITIONS PREVENT A MINIMUM TOEIN DEPTH OF 6 INCHES OR INSTALLATION OF SUPPORT POST TO DEPTH OF 18 INCHES, SILT FENCES SHALL NOT BE USED.

**3** REINFORCED SILT FENCE DETAIL

NOT TO SCALE





**NOTES:**

1. WASHED STONE (#57) TO BE REMOVED AND REPLACED ONCE IT BECOMES CLOGGED WITH SEDIMENT.
2. SEDIMENT TO BE REMOVED WHEN ACCUMULATIONS REACH 1/2 HEIGHT OF SILT FENCE
3. THE KEY TO FUNCTIONAL SILT FENCE OUTLETS IS WEEKLY INSPECTIONS, ROUTINE MAINTENANCE, AND REGULAR SEDIMENT REMOVAL.

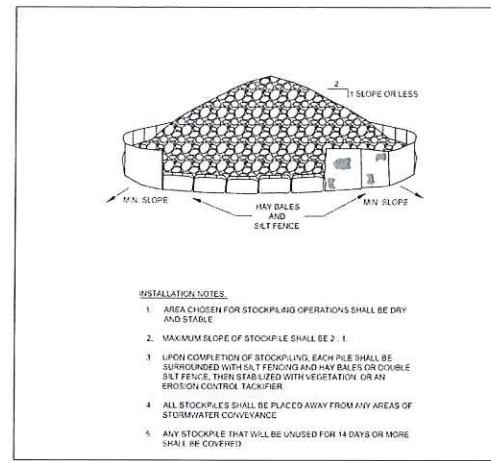
**4** SILT FENCE ROCK OUTLET

NOT TO SCALE

C:\pwworking\kleinfelder.com\10227875\ragdale - Details.dwg - Jun 07, 2023 - 12:37pm

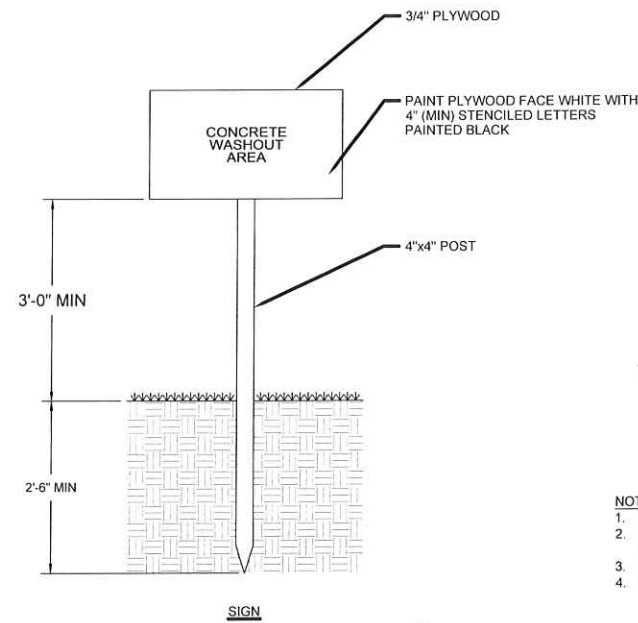
VER.		DATE	MODIFICATION	PAGES MODIFIED	VER.	DATE	MODIFICATION	PAGES MODIFIED	DATE	SCALE	 <b>RAGSDALE SOLAR FACILITY</b> MADISON COUNTY, MS <b>GRADING &amp; EROSION CONTROL DETAILS</b>		 <b>REVAMP</b> ENGINEERING, INC. Rev. A   Page: 13 of 15 Drawing No: RAG1-C-403	
1	2	3	4	5	6	7	10	11	12	13	14	15	16	



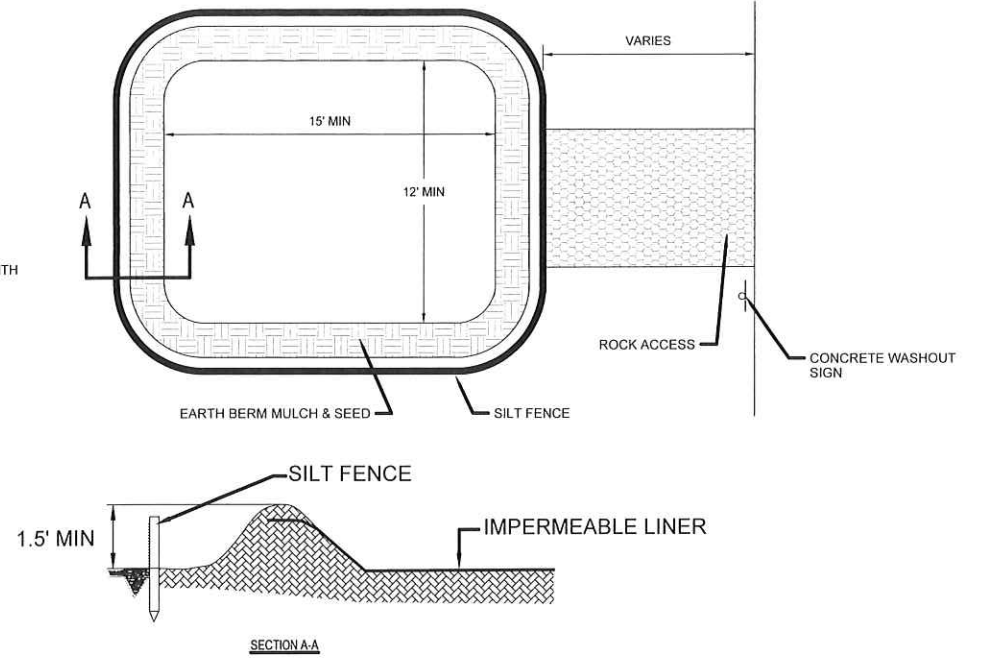


- INSTALLATION NOTES:**
1. AREA CHOSEN FOR STOCKPILING OPERATIONS SHALL BE DRY AND STABLE.
  2. MAXIMUM SLOPE OF STOCKPILE SHALL BE 2 : 1.
  3. UPON COMPLETION OF STOCKPILING, EACH PILE SHALL BE SURROUNDED WITH SALT FENCING AND HAY BALES OR DOUBLE SILT FENCE, THEN STABILIZED WITH VEGETATION OR AN EROSION CONTROL TACKIFIER.
  4. ALL STOCKPILES SHALL BE PLACED AWAY FROM ANY AREAS OF STORMWATER CONVEYANCE.
  5. ANY STOCKPILE THAT WILL BE UNUSED FOR 14 DAYS OR MORE SHALL BE COVERED.

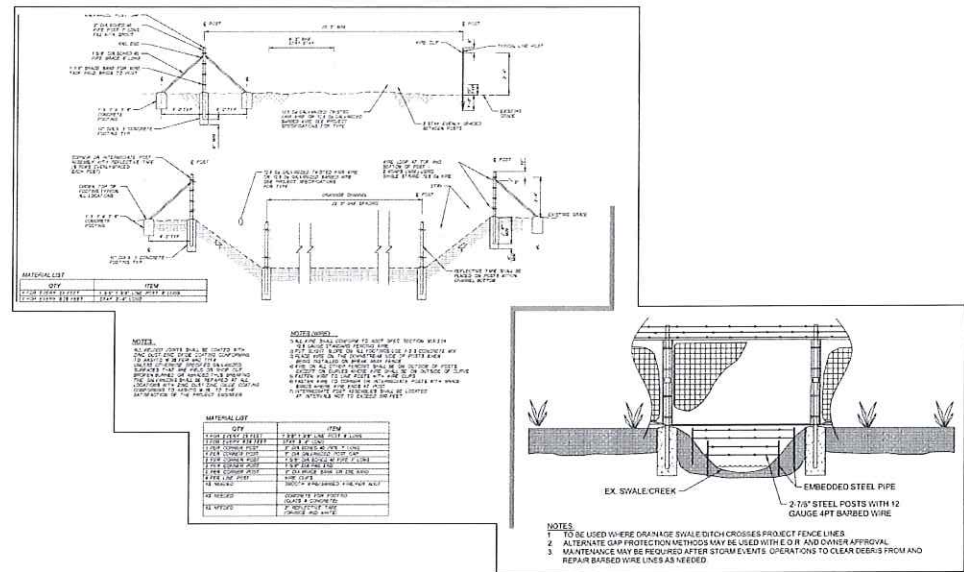
**1 MATERIAL STOCKPILE**  
NOT TO SCALE



**2 CONCRETE WASHOUT**  
NOT TO SCALE



- NOTES:**
1. DIMENSIONS ARE TYPICAL AS SHOWN.
  2. CONCRETE WASHOUT AREAS WILL HAVE AN IMPERMEABLE LINER TO PREVENT CONCRETE WASHOUT WATER FROM INFILTRATING/CONTACTING WITH SOIL.
  3. IMPERMEABLE LINER INCLUDES 10 MIL POLYLINER OR COMPACTED CLAY LINER.
  4. WASHOUT SYSTEMS CAN BE USED AS ALTERNATE WASHOUT AREAS.

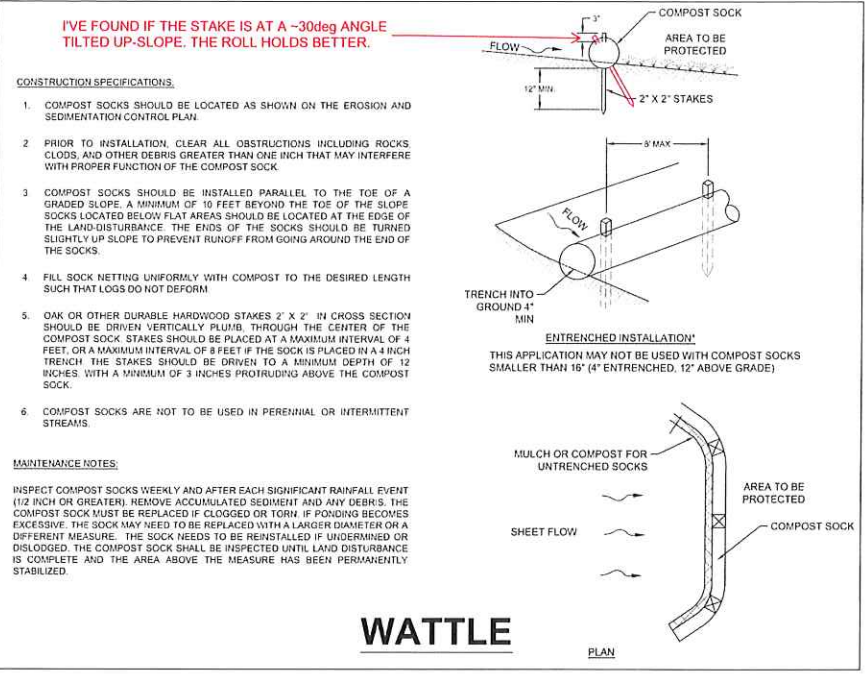


**3 FENCE, WIRE - WATERWAY CROSSING**  
NOT TO SCALE

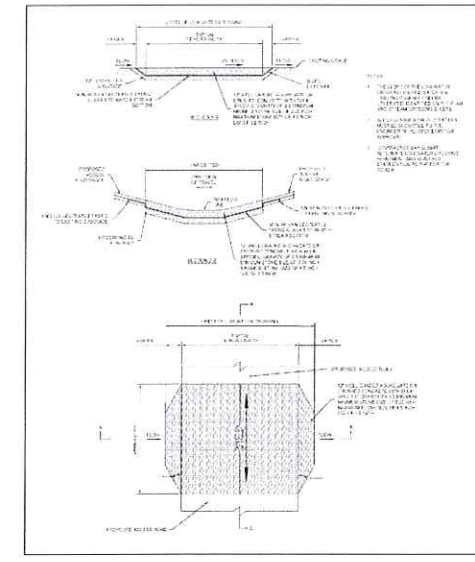
VER.	DATE	MODIFICATION	PAGES MODIFIED	VER.	DATE	MODIFICATION	PAGES MODIFIED	DATE	SCALE	FORMAT	PROJECT	LOCATION	DRAWING NO.	PAGE NO.		
A	06/07/2023	30% CIVIL DESIGN	#					06/07	DRAWN	MM		<b>RAGSDALE SOLAR FACILITY</b> MADISON COUNTY, MS	<b>GRADING &amp; EROSION CONTROL DETAILS</b>			
								06/07	CHECKED	AH					Rev. A	Page: 14 of 15
								06/07	APPROVED	DC					Proj. N°: XXXXXXX	Doc. N°:
										Format ANSI D	SIGNAL ENERGY					

C:\working\kleinfelder\p01\pennadio-allen@kleinfelder.com\00227875\Ragsdale - Details.dwg - Jun 07, 2023 - 12:13:37pm

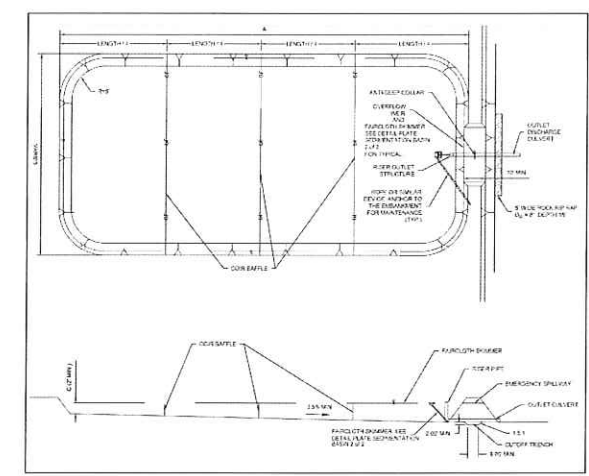




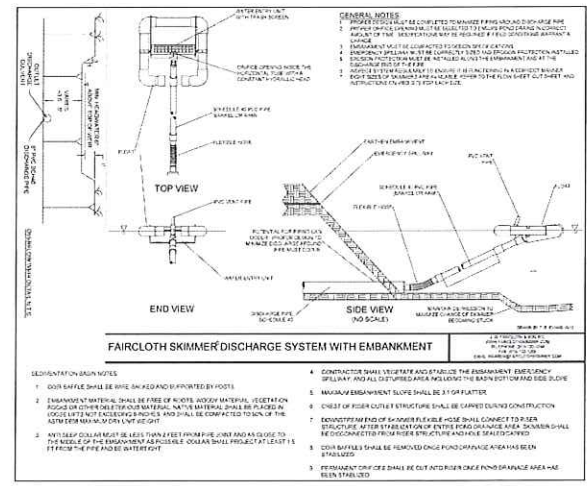
1 COMPOST FILTER SOCK  
NOT TO SCALE



2 LOW WATER CROSSING  
NOT TO SCALE



3 SEDIMENTATION BASIN  
NOT TO SCALE



C:\pwworking\kleinfelder\p01\genradio-allen@kleinfelder.com\0227975\ragdale - Details.dwg - Jun 07, 2023 - 12:37pm

VER.	DATE	MODIFICATION	PAGES MODIFIED	VER.	DATE	MODIFICATION	PAGES MODIFIED	DATE	SCALE	FORMAT	PROJECT	DOC NO.	DRAWING NO.
A	06/07/2023	30% CIVIL DESIGN	#					06/07	DRAWN	MM	 	Proj. No: XXXXXX	Doc. No:
								06/07	CHECKED	AH		Rev. A	Page: 15 of 15
								06/07	APPROVED	DC		Page: 15 of 15	Drawing No: RAG1-C-405

**RAGSDALE SOLAR FACILITY**  
MADISON COUNTY, MS

**GRADING & EROSION CONTROL DETAILS**

**REVAMP**  
ENGINEERING, INC.

Rev. A Page: 15 of 15

Drawing No: RAG1-C-405